

SLC28A1 Antibody



PACO29940

Product Information

Size:

50ug

Reactivity:

Human

Source:

Rabbit

Isotype:

IgG

Applications:

ELISA, IHC, IF

Recommended dilutions:

ELISA:1:2000-1:10000, IHC:1:20-1:200,
IF:1:50-1:200

Protein Background:

Sodium-dependent and pyrimidine-selective. Exhibits the transport characteristics of the nucleoside transport system cit or N2 subtype (N2/cit) (selective for pyrimidine nucleosides and adenosine). It also transports the antiviral pyrimidine nucleoside analogs 3'-azido-3'-deoxythymidine (AZT) and 2',3'-dideoxycytidine (ddC). It may be involved in the intestinal absorption and renal handling of pyrimidine nucleoside analogs used to treat acquired immunodeficiency syndrome (AIDS). It has the following selective inhibition: adenosine, thymidine, cytidine, uridine >> guanosine, inosine.

Gene ID:

SLC28A1

Uniprot

O00337

Synonyms:

Sodium/nucleoside cotransporter 1 (Concentrative nucleoside transporter 1) (CNT 1) (hCNT1) (Na(+)/nucleoside cotransporter 1) (Sodium-coupled nucleoside transporter 1) (Solute carrier family 28 member 1), SLC28A1, CNT1

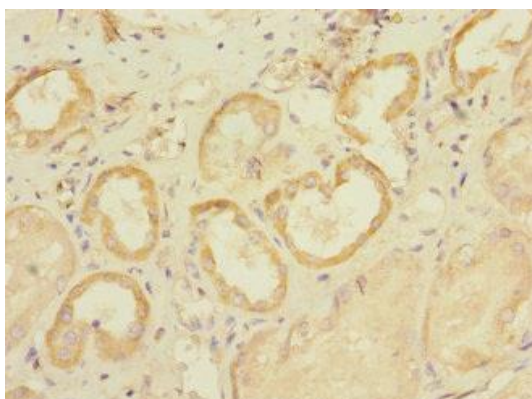
Immunogen:

Recombinant Human Sodium/nucleoside cotransporter 1 protein (1-80AA).

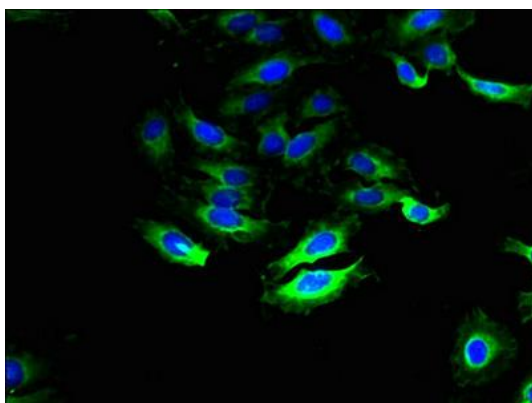
Storage:

Preservative: 0.03% Proclin 300. Constituents: 50% Glycerol, 0.01M PBS, PH 7.4

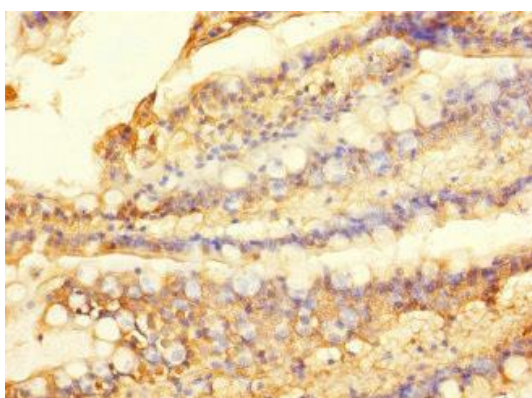
Product Images



Immunohistochemistry of paraffin-embedded human kidney tissue using PACO29940 at dilution of 1:100.



Immunofluorescent analysis of HeLa cells using PACO29940 at dilution of 1:100 and Alexa Fluor 488-conjugated AffiniPure Goat Anti-Rabbit IgG(H+L).



Immunohistochemistry of paraffin-embedded human small intestine tissue using PACO29940 at dilution of 1:100.