

SLC2A4 Antibody



PACO29944

Product Information

Size:

50ug

Reactivity:

Human, Mouse

Source:

Rabbit

Isotype:

IgG

Applications:

ELISA, WB, IHC, IF

Recommended dilutions:

ELISA:1:2000-1:10000, WB:1:500-1:5000,
IHC:1:20-1:200, IF:1:50-1:200

Protein Background:

Insulin-regulated facilitative glucose transporter.

Gene ID:

SLC2A4

Uniprot

P14672

Synonyms:

Solute carrier family 2, facilitated glucose transporter member 4 (Glucose transporter type 4, insulin-responsive) (GLUT-4), SLC2A4, GLUT4

Immunogen:

Recombinant Human Solute carrier family 2, facilitated glucose transporter member 4 protein (223-287AA).

Storage:

Preservative: 0.03% Proclin 300. Constituents: 50% Glycerol, 0.01M PBS, PH 7.4

Product Images



Western blot

All lanes: SLC2A4 antibody at 2 μ g/ml

Lane 1: Mouse heart tissue

Lane 2: HeLa whole cell lysate

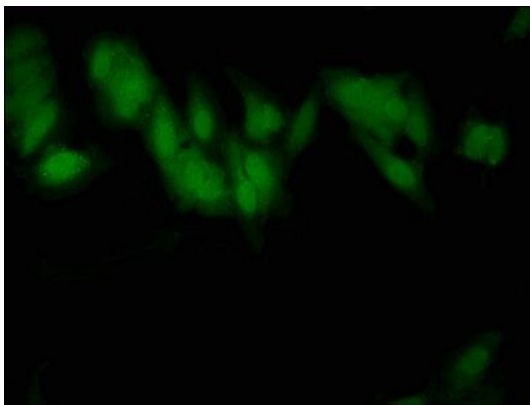
Secondary

Goat polyclonal to rabbit IgG at 1/10000 dilution

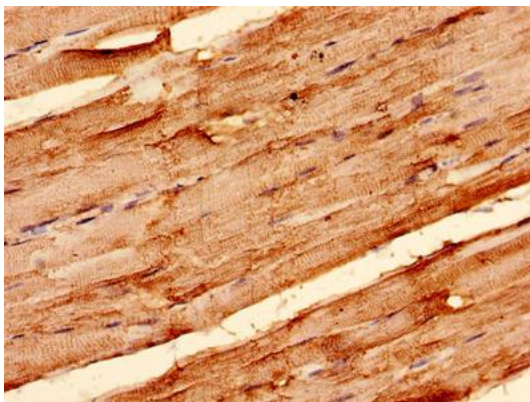
Predicted band size: 55, 44 kDa

Observed band size: 55 kDa

.



Immunofluorescent analysis of HeLa cells using PACO29944 at dilution of 1:100 and Alexa Fluor 488-conjugated AffiniPure Goat Anti-Rabbit IgG(H+L).



Immunohistochemistry analysis of human skeletal muscle tissue using PACO29944 at dilution of 1:100.