

SLC41A2 Antibody



PACO29964

Product Information

Size:

50ug

Reactivity:

Human

Source:

Rabbit

Isotype:

IgG

Applications:

ELISA, IHC, IF

Recommended dilutions:

ELISA:1:2000-1:10000, IHC:1:10-1:100,
IF:1:50-1:200

Protein Background:

Acts as a plasma-membrane magnesium transporter.

Gene ID:

SLC41A2

Uniprot

Q96JW4

Synonyms:

Solute carrier family 41 member 2, SLC41A2

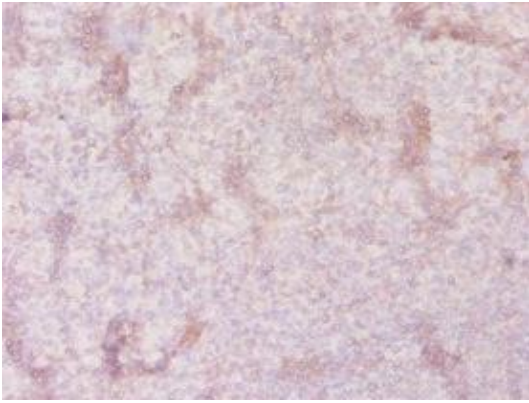
Immunogen:

Recombinant Human Solute carrier family 41 member 2 protein (1-162AA).

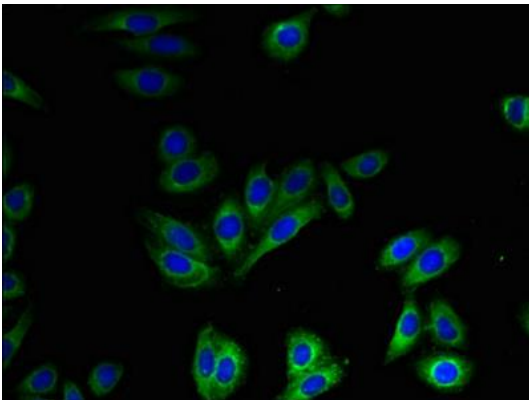
Storage:

Preservative: 0.03% Proclin 300. Constituents: 50% Glycerol, 0.01M PBS, PH 7.4

Product Images



Immunohistochemistry of paraffin-embedded human tonsil tissue using PACO29964 at dilution of 1:20.



Immunofluorescent analysis of HepG2 cells using PACO29964 at dilution of 1:100 and Alexa Fluor 488-conjugated AffiniPure Goat Anti-Rabbit IgG(H+L).