

SLC5A10 Antibody



PACO29968

Product Information

Size:

50ug

Reactivity:

Human

Source:

Rabbit

Isotype:

IgG

Applications:

ELISA, IHC, IF

Recommended dilutions:

ELISA:1:2000-1:10000, IHC:1:20-1:200,
IF:1:50-1:200

Protein Background:

High capacity transporter for mannose and fructose and, to a lesser extent, glucose, AMG, and galactose.

Gene ID:

SLC5A10

Uniprot

A0PJK1

Synonyms:

Sodium/glucose cotransporter 5 (Na(+)/glucose cotransporter 5) (Solute carrier family 5 member 10), SLC5A10, SGLT5

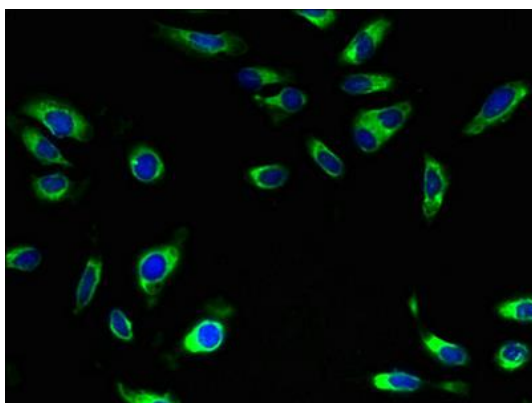
Immunogen:

Recombinant Human Sodium/glucose cotransporter 5 protein (239-288AA).

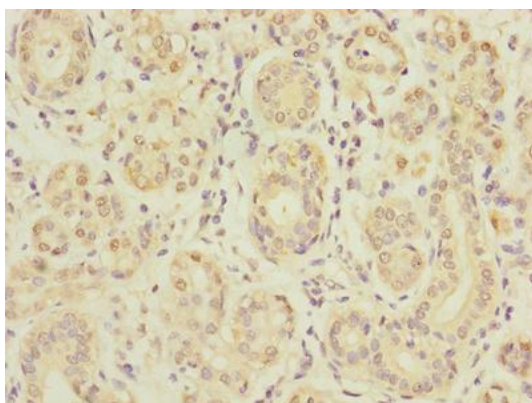
Storage:

Preservative: 0.03% Proclin 300. Constituents: 50% Glycerol, 0.01M PBS, PH 7.4

Product Images



Immunofluorescent analysis of HeLa cells using PACO29968 at dilution of 1:100 and Alexa Fluor 488-conjugated AffiniPure Goat Anti-Rabbit IgG(H+L).



Immunohistochemistry of paraffin-embedded human salivary gland tissue using PACO29968 at dilution of 1:100.



Immunohistochemistry of paraffin-embedded human skeletal muscle tissue using PACO29968 at dilution of 1:100.