

PACO30012

Product Information

Size:

50ug

Reactivity:

Mouse, Human

Source:

Rabbit

Isotype:

IgG

Applications:

ELISA, WB

Recommended dilutions:

ELISA:1:2000-1:10000, WB:1:1000-1:5000

Protein Background:

Flavoenzyme which catalyzes the oxidation of spermine to spermidine. Can also use N(1)-acetylspermine and spermidine as substrates, with different affinity depending on the isoform (isozyme) and on the experimental conditions. Plays an important role in the regulation of polyamine intracellular concentration and has the potential to act as a determinant of cellular sensitivity to the antitumor polyamine analogs. May contribute to beta-alanine production via aldehyde dehydrogenase conversion of 3-amino-propanal.

Gene ID:

Smox

Uniprot

Q99K82

Synonyms:

Spermine oxidase (EC 1.5.3.16) (Polyamine oxidase 1) (PAO-1) (PAOh1), Smox, Smo

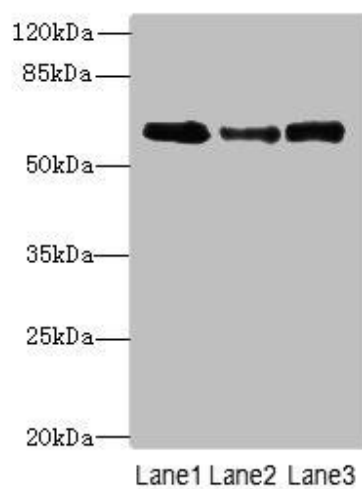
Immunogen:

Recombinant Mouse Spermine oxidase protein (1-555AA).

Storage:

Preservative: 0.03% Proclin 300. Constituents: 50% Glycerol, 0.01M PBS, PH 7.4

Product Images



Western blot

All lanes: Smox antibody at 3 μ g/ml

Lane 1: PC-3 whole cell lysate

Lane 2: A549 whole cell lysate

Lane 3: 293T whole cell lysate

Secondary

Goat polyclonal to rabbit IgG at 1/10000 dilution

Predicted band size: 62, 66, 27, 23, 28, 60, 57, 47, 61, 21 kDa

Observed band size: 62 kDa