

SNX20 Antibody



PACO30048

Product Information

Size:

50ug

Reactivity:

Human, Mouse

Source:

Rabbit

Isotype:

IgG

Applications:

ELISA, WB, IHC

Recommended dilutions:

ELISA:1:2000-1:10000, WB:1:1000-1:5000,
IHC:1:10-1:200

Protein Background:

Serves as a sorting protein that cycles P-selectin glycoprotein ligand 1 (PSLG1) into endosomes with no impact on leukocytes recruitment.

Gene ID:

SNX20

Uniprot

Q7Z614

Synonyms:

Sorting nexin-20 (Selectin ligand-interactor cytoplasmic 1) (SLIC-1), SNX20, SLIC1

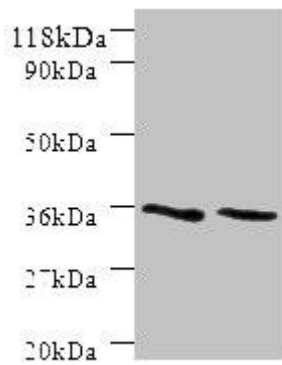
Immunogen:

Recombinant Human Sorting nexin-20 protein (1-102AA).

Storage:

Preservative: 0.03% Proclin 300. Constituents: 50% Glycerol, 0.01M PBS, PH 7.4

Product Images



Western blot

All lanes: SNX20 antibody at 2 μ g/ml

Lane 1: Mouse spleen tissue

Lane 2: Mouse skeletal muscle tissue

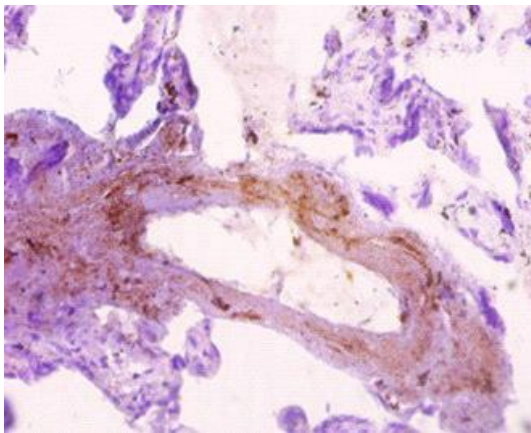
Secondary

Goat polyclonal to rabbit IgG at 1/10000 dilution

Predicted band size: 37, 18, 15, 12 kDa

Observed band size: 37 kDa

.



Immunohistochemistry of paraffin-embedded human placenta tissue using PACO30048 at dilution of 1:10.