

Product Information

Size:

50ug

Reactivity:

Human

Source:

Rabbit

Isotype:

IgG

Applications:

ELISA, IHC

Recommended dilutions:

ELISA:1:2000-1:10000, IHC:1:20-1:200

Protein Background:

SOCS family proteins form part of a classical negative feedback system that regulates cytokine signal transduction. SOCS1 is involved in negative regulation of cytokines that signal through the JAK/STAT3 pathway. Through binding to JAKs, inhibits their kinase activity. In vitro, also suppresses Tec protein-tyrosine activity. Appears to be a major regulator of signaling by interleukin 6 (IL6) and leukemia inhibitory factor (LIF). Regulates interferon-gamma mediated sensory neuron survival. By similarity. Probable substrate recognition component of an ECS (Elongin BC-CUL2/5-SOCS-box protein) E3 ubiquitin ligase complex which mediates the ubiquitination and subsequent proteasomal degradation of target proteins. Seems to recognize JAK2. SOCS1 appears to be a negative regulator in IGF1R signaling pathway.

Gene ID:

SOCS1

Uniprot

O15524

Synonyms:

Suppressor of cytokine signaling 1 (SOCS-1) (JAK-binding protein) (JAB) (STAT-induced STAT inhibitor 1) (SSI-1) (Tec-interacting protein 3) (TIP-3), SOCS1, SSI1 TIP3

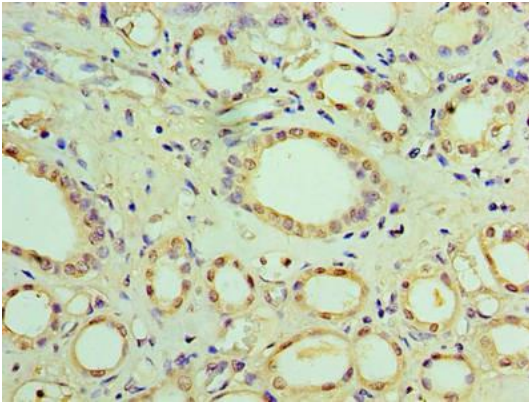
Immunogen:

Recombinant Human Suppressor of cytokine signaling 1 protein (1-211AA).

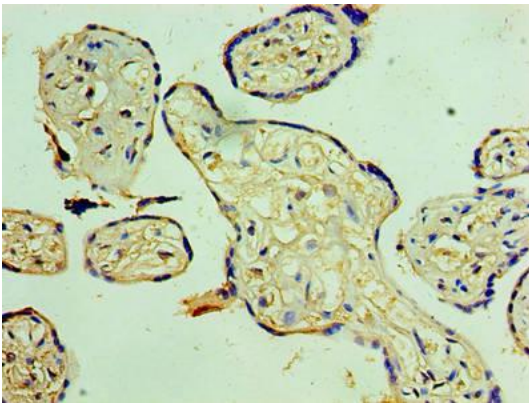
Storage:

Preservative: 0.03% Proclin 300. Constituents: 50% Glycerol, 0.01M PBS, PH 7.4

Product Images



Immunohistochemistry of paraffin-embedded human kidney tissue using PACO30056 at dilution of 1:100.



Immunohistochemistry of paraffin-embedded human placenta tissue using PACO30056 at dilution of 1:100.