

Sod1 Antibody



PACO30068

Product Information

Size:

50ug

Reactivity:

Mouse, Rat, Human

Source:

Rabbit

Isotype:

IgG

Applications:

ELISA, WB, IHC, IP

Recommended dilutions:

ELISA:1:2000-1:10000, WB:1:500-1:5000,
IHC:1:10-1:100, IP:1:200-1:2000

Protein Background:

Destroys radicals which are normally produced within the cells and which are toxic to biological systems.

Gene ID:

Sod1

Uniprot

P08228

Synonyms:

Superoxide dismutase [Cu-Zn] (EC 1.15.1.1), Sod1

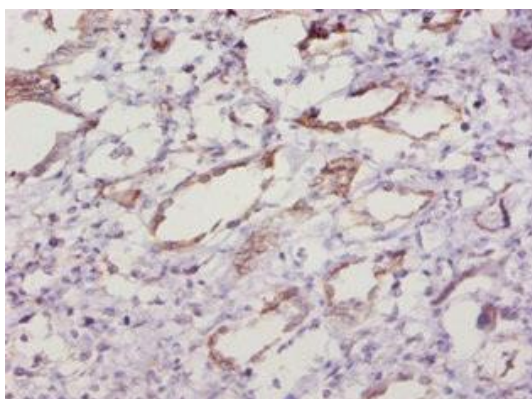
Immunogen:

Recombinant Mouse Superoxide dismutase [Cu-Zn] protein (2-154AA).

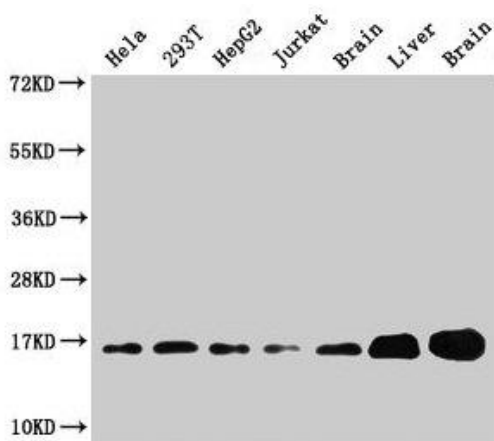
Storage:

Preservative: 0.03% Proclin 300. Constituents: 50% Glycerol, 0.01M PBS, PH 7.4

Product Images



Immunohistochemistry of paraffin-embedded human kidney tissue using PACO30068 at dilution of 1:10.



Western Blot

Positive WB detected in: HeLa whole cell lysate, 293T whole cell lysate, HepG2 whole cell lysate, Jurkat whole cell lysate, Rat brain tissue, Rat liver tissue, Mouse brain tissue

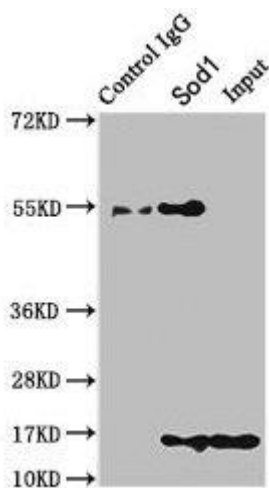
All lanes: Sod1 antibody at 3 μ g/ml

Secondary

Goat polyclonal to rabbit IgG at 1/50000 dilution

Predicted band size: 16 kDa

Observed band size: 16 kDa



Immunoprecipitating Sod1 in HEK293 whole cell lysate

Lane 1: Rabbit control IgG instead of PACO30068 in HEK293 whole cell lysate. For western blotting, a HRP-conjugated Protein G antibody was used as the secondary antibody (1/2000)

Lane 2: PACO30068 (8 μ g) + HEK293 whole cell lysate (500 μ g)

Lane 3: HEK293 whole cell lysate (10 μ g)