

STX6 Antibody



PACO30206

Product Information

Size:

50ug

Reactivity:

Chicken, Mouse

Source:

Rabbit

Isotype:

IgG

Applications:

ELISA, WB

Recommended dilutions:

ELISA:1:2000-1:10000, WB:1:1000-1:5000

Protein Background:

Involved in intracellular vesicle trafficking.

Gene ID:

STX6

Uniprot

Q5ZL19

Synonyms:

Syntaxin-6, STX6

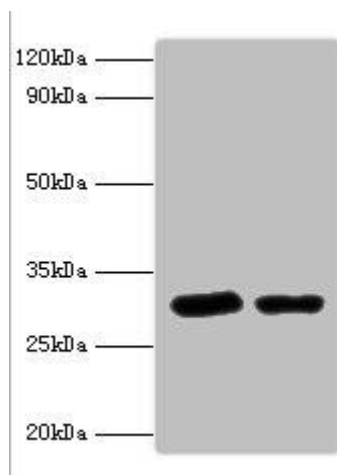
Immunogen:

Recombinant Chicken Syntaxin-6 protein (4-231AA).

Storage:

Preservative: 0.03% Proclin 300. Constituents: 50% Glycerol, 0.01M PBS, PH 7.4

Product Images



Western blot

All lanes: Syntaxin-6 antibody at 2 μ g/ml

Lane 1: Mouse brain tissue

Lane 2: 293T whole cell lysate

Secondary

Goat polyclonal to rabbit IgG at 1/10000 dilution

Predicted band size: 29 kDa

Observed band size: 29 kDa

.