

TMEM161A Antibody



PACO30498

Product Information

Size:

50ug

Reactivity:

Human

Source:

Rabbit

Isotype:

IgG

Applications:

ELISA, WB, IHC, IF

Recommended dilutions:

ELISA:1:2000-1:10000, WB:1:500-1:5000,
IHC:1:20-1:200, IF:1:50-1:200

Protein Background:

May play a role in protection against oxidative stress. Overexpression leads to reduced levels of oxidant-induced DNA damage and apoptosis.

Gene ID:

TMEM161A

Uniprot

Q9NX61

Synonyms:

Transmembrane protein 161A (Adaptive response to oxidative stress protein 29)
(AROS-29), TMEM161A

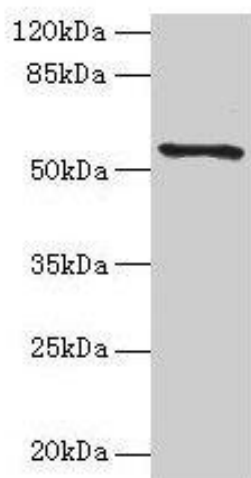
Immunogen:

Recombinant Human Transmembrane protein 161A protein (29-98AA).

Storage:

Preservative: 0.03% Proclin 300. Constituents: 50% Glycerol, 0.01M PBS, PH 7.4

Product Images



Western blot

All lanes: TMEM161A antibody at 1 μ g/ml + PC-3 whole cell lysate

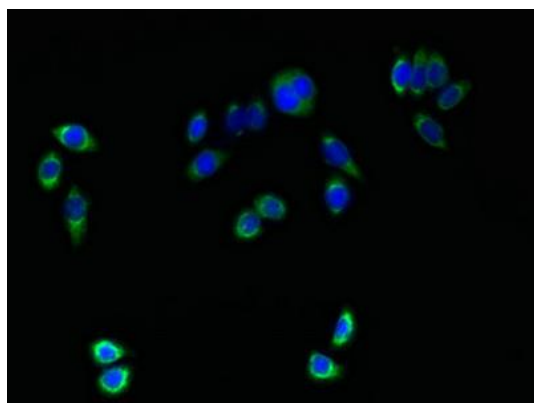
Secondary

Goat polyclonal to rabbit IgG at 1/10000 dilution

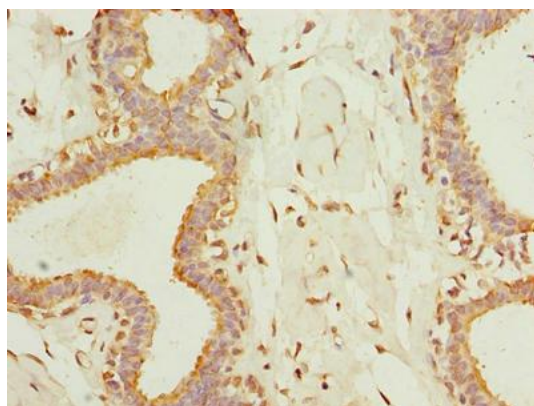
Predicted band size: 54, 42 kDa

Observed band size: 54 kDa

.



Immunofluorescent analysis of PC-3 cells using PACO30498 at dilution of 1:100 and Alexa Fluor 488-conjugated AffiniPure Goat Anti-Rabbit IgG(H+L).



Immunohistochemistry of paraffin-embedded human breast cancer using PACO30498 at dilution of 1:100.