

PACO30662

Product Information

Size:

50ug

Reactivity:

Human

Source:

Rabbit

Isotype:

IgG

Applications:

ELISA, IHC, IF

Recommended dilutions:

ELISA:1:2000-1:10000, IHC:1:20-1:200,
IF:1:50-1:200

Protein Background:

ER membrane protein complex, integral component of endoplasmic reticulum membrane, integral component of membrane, integral component of omegasome membrane, autophagosome assembly, protein folding in endoplasmic reticulum.

Gene ID:

EMC6

Uniprot

Q9BV81

Synonyms:

ER membrane protein complex subunit 6 (Transmembrane protein 93), EMC6, TMEM93

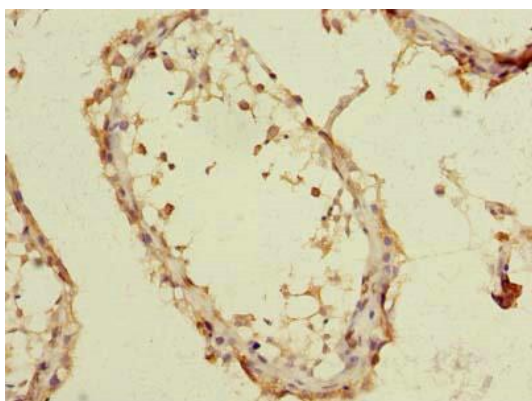
Immunogen:

Recombinant Human ER membrane protein complex subunit 6 protein (2-47AA).

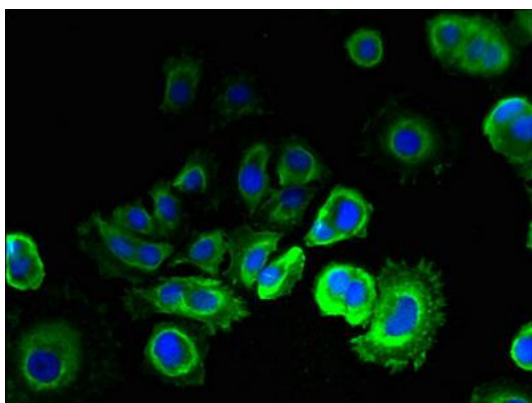
Storage:

Preservative: 0.03% Proclin 300. Constituents: 50% Glycerol, 0.01M PBS, PH 7.4

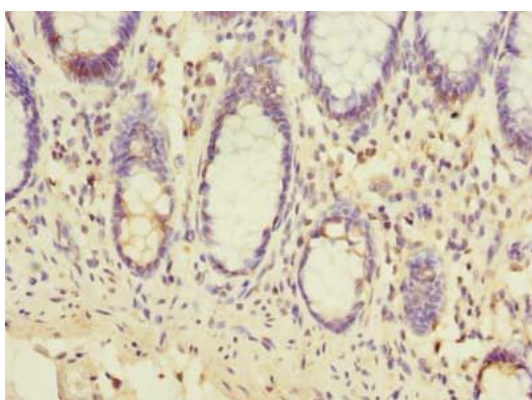
Product Images



Immunohistochemistry of paraffin-embedded human testis tissue using PACO30662 at dilution of 1:100.



Immunofluorescent analysis of MCF-7 cells using PACO30662 at dilution of 1:100 and Alexa Fluor 488-conjugated AffiniPure Goat Anti-Rabbit IgG(H+L).



Immunohistochemistry of paraffin-embedded human colon cancer using PACO30662 at dilution of 1:100.