

TIMP1 Antibody



PACO30714

Product Information

Size:

50ug

Reactivity:

Human, Mouse

Source:

Rabbit

Isotype:

IgG

Applications:

ELISA, WB, IHC

Recommended dilutions:

ELISA:1:2000-1:10000, WB:1:1000-1:5000,
IHC:1:20-1:200

Protein Background:

Gene ID:

TIMP1

Uniprot

P01033

Synonyms:

Metalloproteinase inhibitor 1 (Erythroid-potentiating activity) (EPA) (Fibroblast collagenase inhibitor) (Collagenase inhibitor) (Tissue inhibitor of metalloproteinases 1) (TIMP-1), TIMP1, CLGI TIMP

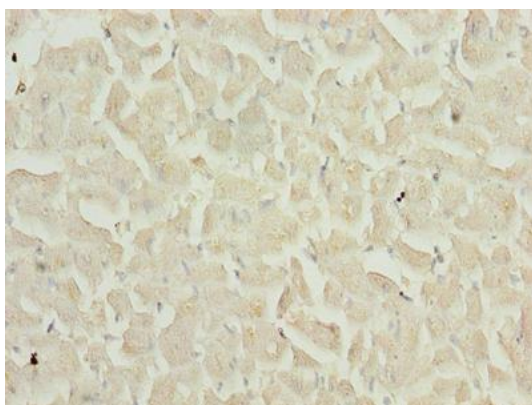
Immunogen:

Recombinant Human Metalloproteinase inhibitor 1 protein (24-207AA).

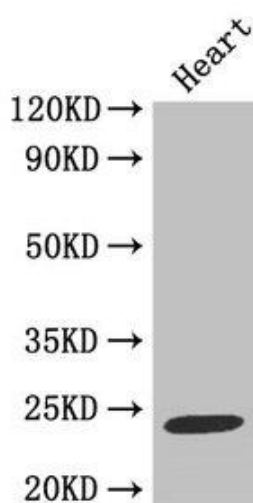
Storage:

Preservative: 0.03% Proclin 300. Constituents: 50% Glycerol, 0.01M PBS, PH 7.4

Product Images



Immunohistochemistry of paraffin-embedded human heart tissue using PACO30714 at dilution of 1:100.



Western Blot

Positive WB detected in: Mouse heart tissue

All lanes: TIMP1 antibody at 2 μ g/ml

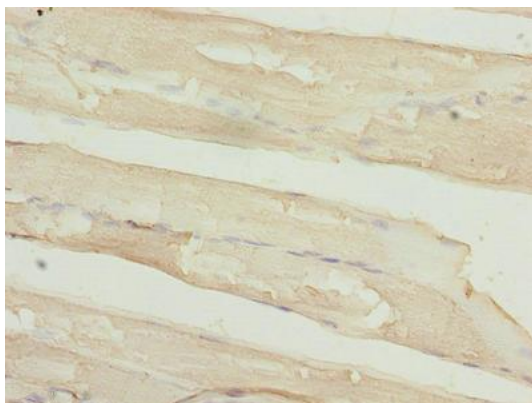
Secondary

Goat polyclonal to rabbit IgG at 1/50000 dilution

Predicted band size: 24 kDa

Observed band size: 24 kDa

.



Immunohistochemistry of paraffin-embedded human skeletal muscle tissue using PACO30714 at dilution of 1:100.