

Trem2 Antibody



PACO30798

Product Information

Size:

50ug

Reactivity:

Mouse, Human

Source:

Rabbit

Isotype:

IgG

Applications:

ELISA, WB

Recommended dilutions:

ELISA:1:2000-1:10000, WB:1:500-1:2000

Protein Background:

May have a role in chronic inflammations and may stimulate production of constitutive rather than inflammatory chemokines and cytokines. Forms a receptor signaling complex with TYROBP and triggers activation of the immune responses in macrophages and dendritic cells.

Gene ID:

Trem2

Uniprot

Q99NH8

Synonyms:

Triggering receptor expressed on myeloid cells 2 (TREM-2) (Triggering receptor expressed on monocytes 2), Trem2, Trem2a Trem2b Trem2c

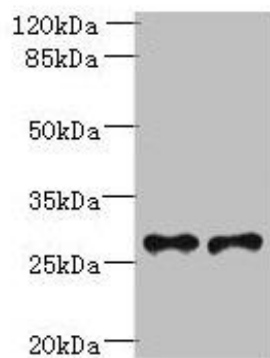
Immunogen:

Recombinant Mouse Triggering receptor expressed on myeloid cells 2 protein (19-171AA).

Storage:

Preservative: 0.03% Proclin 300. Constituents: 50% Glycerol, 0.01M PBS, PH 7.4

Product Images



Western blot

All lanes: Trem2 antibody at 6 μ g/ml

Lane 1: Mouse liver tissue

Lane 2: THP-1 whole cell lysate

Secondary

Goat polyclonal to rabbit IgG at 1/10000 dilution

Predicted band size: 25, 28 kDa

Observed band size: 28 kDa

.