
Product Information

Size:

50ug

Reactivity:

Human, Mouse

Source:

Rabbit

Isotype:

IgG

Applications:

ELISA, WB, IHC, IF

Recommended dilutions:

ELISA:1:2000-1:10000, WB:1:500-1:2000,
IHC:1:20-1:200, IF:1:50-1:200

Protein Background:

Proteasome-associated deubiquitinase which releases ubiquitin from the proteasome targeted ubiquitinated proteins. Ensures the regeneration of ubiquitin at the proteasome. Is a reversibly associated subunit of the proteasome and a large fraction of proteasome-free protein exists within the cell. Required for the degradation of the chemokine receptor CXCR4 which is critical for CXCL12-induced cell chemotaxis. Serves also as a physiological inhibitor of endoplasmic reticulum-associated degradation (ERAD) under the non-stressed condition by inhibiting the degradation of unfolded endoplasmic reticulum proteins via interaction with ERN1. Indispensable for synaptic development and function at neuromuscular junctions (NMJs).

Gene ID:

USP14

Uniprot

P54578

Synonyms:

Ubiquitin carboxyl-terminal hydrolase 14 (EC 3.4.19.12) (Deubiquitinating enzyme 14) (Ubiquitin thioesterase 14) (Ubiquitin-specific-processing protease 14), USP14, TGT

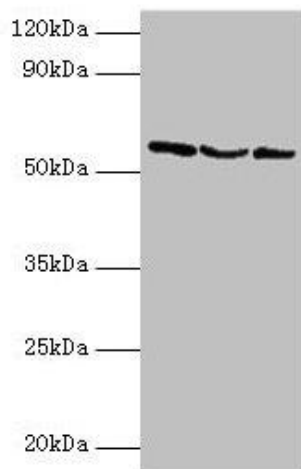
Immunogen:

Recombinant Human Ubiquitin carboxyl-terminal hydrolase 14 protein (1-494AA).

Storage:

Preservative: 0.03% Proclin 300. Constituents: 50% Glycerol, 0.01M PBS, PH 7.4

Product Images



Western blot

All lanes: USP14 antibody at 2 μ g/ml

Lane 1: Hela whole cell lysate

Lane 2: 293T whole cell lysate

Lane 3: NIH/3T3 whole cell lysate

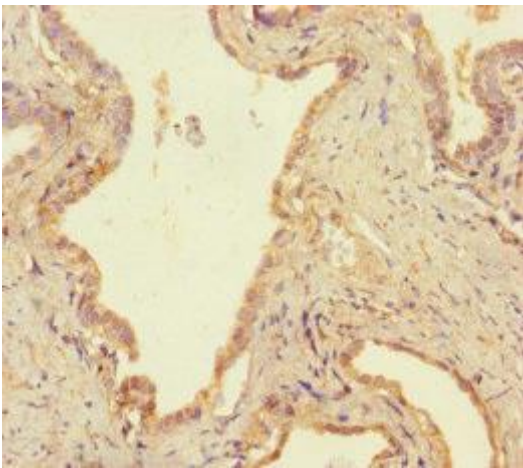
Secondary

Goat polyclonal to rabbit IgG at 1/10000 dilution

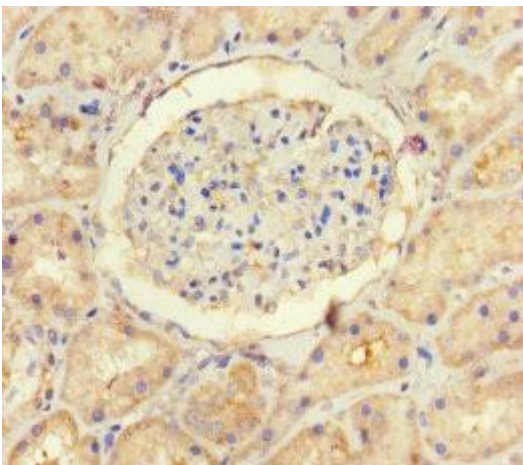
Predicted band size: 57, 53, 55 kDa

Observed band size: 57 kDa

.



Immunohistochemistry of paraffin-embedded human prostate cancer using PACO31020 at dilution of 1:100.



Immunohistochemistry of paraffin-embedded human kidney tissue using PACO31020 at dilution of 1:100.