

VAMP7 Antibody



PACO31036

Product Information

Size:

50ug

Reactivity:

Chicken

Source:

Rabbit

Isotype:

IgG

Applications:

ELISA, IHC

Recommended dilutions:

ELISA:1:2000-1:10000, IHC:1:20-1:200

Protein Background:

Involved in the targeting and/or fusion of transport vesicles to their target membrane during transport of proteins from the early endosome to the lysosome. Required for heterotypic fusion of late endosomes with lysosomes and homotypic lysosomal fusion. Required for calcium regulated lysosomal exocytosis. Involved in the export of chylomicrons from the endoplasmic reticulum to the cis Golgi. Required for focal exocytosis of late endocytic vesicles during phagosome formation.

Gene ID:

VAMP7

Uniprot

Q5ZL74

Synonyms:

Vesicle-associated membrane protein 7 (Synaptobrevin-like protein 1), VAMP7, SYBL1

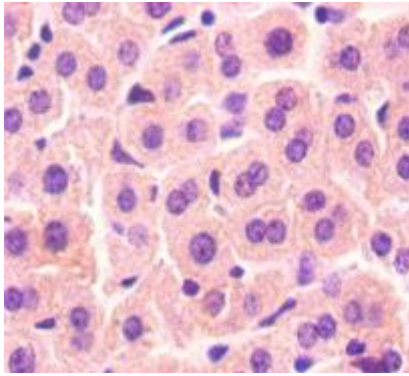
Immunogen:

Recombinant Chicken Vesicle-associated membrane protein 7 protein (2-181AA).

Storage:

Preservative: 0.03% Proclin 300. Constituents: 50% Glycerol, 0.01M PBS, PH 7.4

Product Images



Immunohistochemistry of paraffin-embedded mouse liver tissue using PACO31036 at dilution of 1:50.