

# WDR91 Antibody



PACO31084

---

## Product Information

**Size:**

50ug

**Reactivity:**

Human

**Source:**

Rabbit

**Isotype:**

IgG

**Applications:**

ELISA, IHC

**Recommended dilutions:**

ELISA:1:2000-1:10000, IHC:1:20-1:200

**Protein Background:**

**Gene ID:**

WDR91

**Uniprot**

A4D1P6

**Synonyms:**

WD repeat-containing protein 91, WDR91

**Immunogen:**

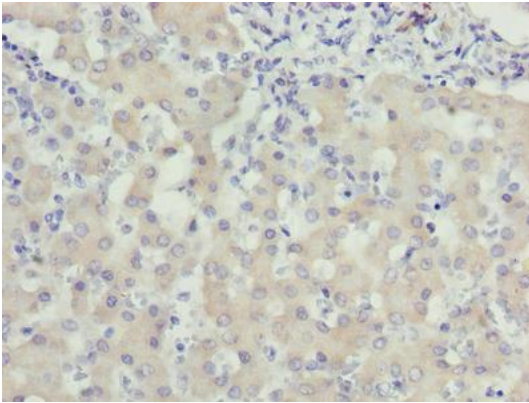
Recombinant Human WD repeat-containing protein 91 protein (1-747AA).

**Storage:**

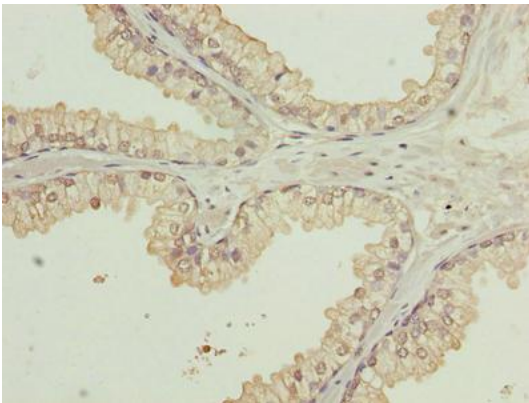
Preservative: 0.03% Proclin 300. Constituents: 50% Glycerol, 0.01M PBS, PH 7.4

## Product Images

---



Immunohistochemistry of paraffin-embedded human liver tissue using PACO31084 at dilution of 1:100.



Immunohistochemistry of paraffin-embedded human prostate cancer using PACO31084 at dilution of 1:100.