

XG Antibody



PACO31096

Product Information

Size:

50ug

Reactivity:

Human, Mouse

Source:

Rabbit

Isotype:

IgG

Applications:

ELISA, WB

Recommended dilutions:

ELISA:1:2000-1:10000, WB:1:1000-1:5000

Protein Background:

integral component of plasma membrane.

Gene ID:

XG

Uniprot

P55808

Synonyms:

Glycoprotein Xg (Protein PBDX), XG, PBDX

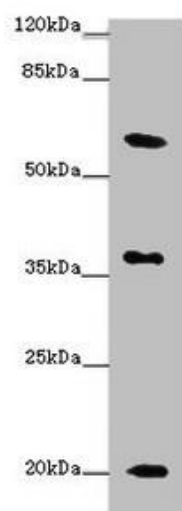
Immunogen:

Recombinant Human Glycoprotein Xg protein (22-143AA).

Storage:

Preservative: 0.03% Proclin 300. Constituents: 50% Glycerol, 0.01M PBS, PH 7.4

Product Images



Western blot

All lanes: XG antibody at 10 μ g/ml + Mouse heart tissue

Secondary

Goat polyclonal to rabbit IgG at 1/10000 dilution

Predicted band size: 20, 22 kDa

Observed band size: 20, 37, 60 kDa