

# YPEL1 Antibody



PACO31124

---

## Product Information

**Size:**

50ug

**Reactivity:**

Human

**Source:**

Rabbit

**Isotype:**

IgG

**Applications:**

ELISA, IHC

**Recommended dilutions:**

ELISA:1:2000-1:10000, IHC:1:20-1:200

**Protein Background:**

May play a role in epithelioid conversion of fibroblasts.

**Gene ID:**

YPEL1

**Uniprot**

O60688

**Synonyms:**

Protein yippee-like 1, YPEL1

**Immunogen:**

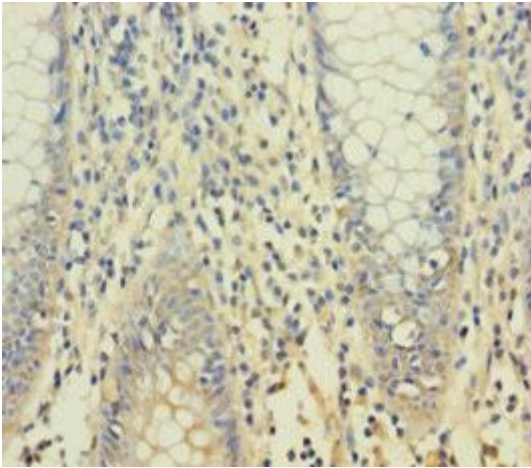
Recombinant Human Protein yippee-like 1 protein (1-119AA).

**Storage:**

Preservative: 0.03% Proclin 300. Constituents: 50% Glycerol, 0.01M PBS, PH 7.4

## Product Images

---



Immunohistochemistry of paraffin-embedded human colon cancer using PACO31124 at dilution of 1:100.