

# ZNF221 Antibody



PACO31208

---

## Product Information

**Size:**

50ug

**Reactivity:**

Human

**Source:**

Rabbit

**Isotype:**

IgG

**Applications:**

ELISA, IHC

**Recommended dilutions:**

ELISA:1:2000-1:10000, IHC:1:20-1:200

**Protein Background:**

May be involved in transcriptional regulation.

**Gene ID:**

ZNF221

**Uniprot**

Q9UK13

**Synonyms:**

Zinc finger protein 221, ZNF221

**Immunogen:**

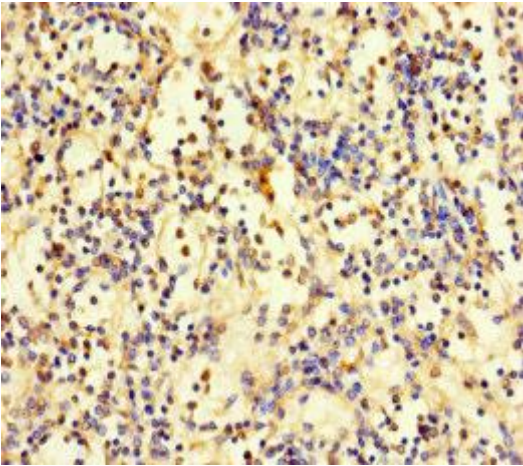
Recombinant Human Zinc finger protein 221 protein (1-300AA).

**Storage:**

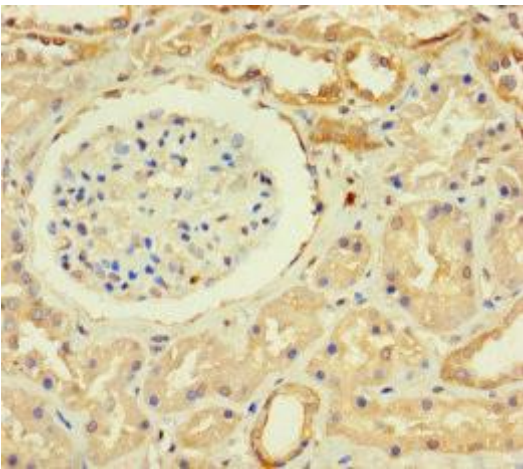
Preservative: 0.03% Proclin 300. Constituents: 50% Glycerol, 0.01M PBS, PH 7.4

## Product Images

---



Immunohistochemistry of paraffin-embedded human spleen tissue using PACO31208 at dilution of 1:100.



Immunohistochemistry of paraffin-embedded human kidney tissue using PACO31208 at dilution of 1:100.