

# ZNF624 Antibody



PACO31432

---

## Product Information

**Size:**

50ug

**Reactivity:**

Human

**Source:**

Rabbit

**Isotype:**

IgG

**Applications:**

ELISA, IHC, IF

**Recommended dilutions:**

ELISA:1:2000-1:10000, IHC:1:20-1:200,  
IF:1:50-1:200

**Protein Background:**

May be involved in transcriptional regulation.

**Gene ID:**

ZNF624

**Uniprot**

Q9P2J8

**Synonyms:**

Zinc finger protein 624, ZNF624, KIAA1349

**Immunogen:**

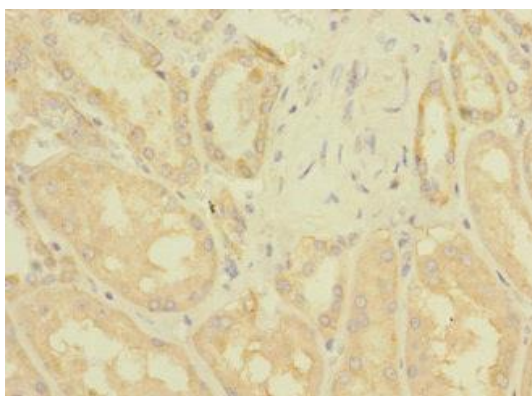
Recombinant Human Zinc finger protein 624 protein (127-327AA).

**Storage:**

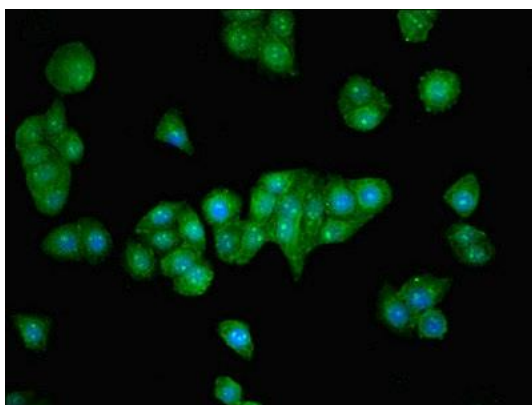
Preservative: 0.03% Proclin 300. Constituents: 50% Glycerol, 0.01M PBS, PH 7.4

## Product Images

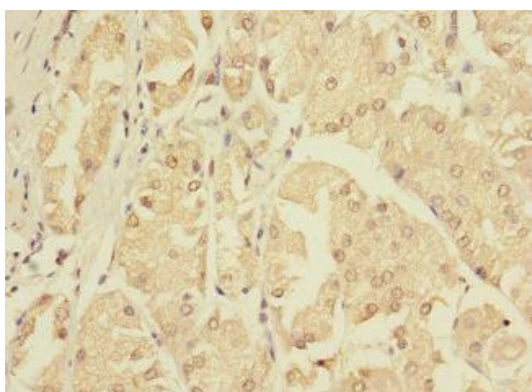
---



Immunohistochemistry of paraffin-embedded human kidney tissue using PACO31432 at dilution of 1:100.



Immunofluorescent analysis of PC-3 cells using PACO31432 at dilution of 1:100 and Alexa Fluor 488-conjugated AffiniPure Goat Anti-Rabbit IgG(H+L).



Immunohistochemistry of paraffin-embedded human gastric cancer using PACO31432 at dilution of 1:100.