

PACO31664

Product Information

Size:

50ug

Reactivity:

Human

Source:

Rabbit

Isotype:

IgG

Applications:

ELISA, WB, IHC

Recommended dilutions:

ELISA:1:2000-1:10000, WB:1:1000-1:5000,
IHC:1:20-1:200

Protein Background:

Component of a Polycomb group (PcG) multiprotein PRC1-like complex, a complex class required to maintain the transcriptionally repressive state of many genes, including Hox genes, throughout development. PcG PRC1 complex acts via chromatin remodeling and modification of histones; it mediates monoubiquitination of histone H2A 'Lys-119', rendering chromatin heritably changed in its expressibility. The complex composed of RNF2, UB2D3 and BMI1 binds nucleosomes, and has activity only with nucleosomal histone H2A. In the PRC1-like complex, regulates the E3 ubiquitin-protein ligase activity of RNF2/RING2.

Gene ID:

BMI1

Uniprot

P35226

Synonyms:

Polycomb complex protein BMI-1 (Polycomb group RING finger protein 4) (RING finger protein 51), BMI1, PCGF4 RNF51

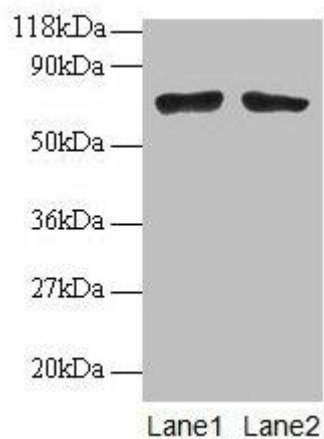
Immunogen:

Recombinant Human Polycomb complex protein BMI-1 protein (1-247AA).

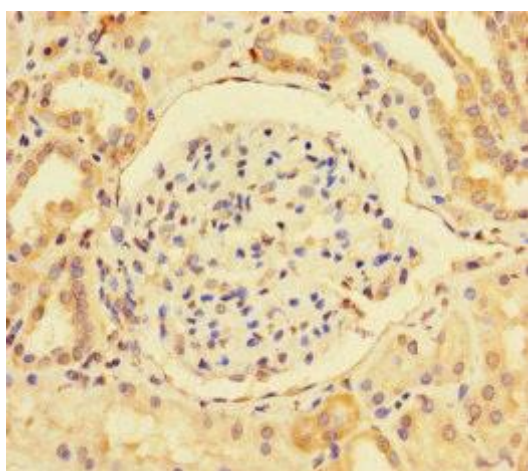
Storage:

Preservative: 0.03% Proclin 300. Constituents: 50% Glycerol, 0.01M PBS, PH 7.4

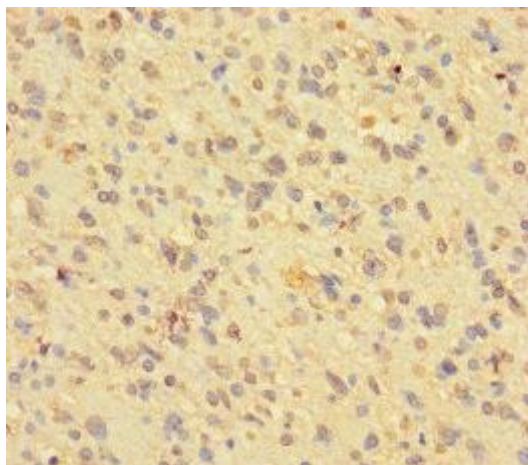
Product Images



Western blot
All lanes: BMI1 antibody 2 μ g/ml
Lane 1: EC109 whole cell lysate
Lane 2: 293T whole cell lysate
Secondary
Goat polyclonal to rabbit IgG at 1/15000 dilution
Predicted band size: 37 kDa
Observed band size: 70 kDa



Immunohistochemistry of paraffin-embedded human kidney tissue using PACO31664 at dilution of 1:100.



Immunohistochemistry of paraffin-embedded human glioma using PACO31664 at dilution of 1:100.