

PACO31688

Product Information

Size:

50ug

Reactivity:

Human

Source:

Rabbit

Isotype:

IgG

Applications:

ELISA, WB, IHC, IF

Recommended dilutions:

ELISA:1:2000-1:10000, WB:1:2000-1:10000,
IHC:1:50-1:500, IF:1:500-1:1000

Protein Background:

Plays a role in the recruitment of the RNA exosome complex to pre-rRNA to mediate the 3'-5' end processing of the 5.8S rRNA; this function may include MPHOSPH6. Can activate PRKDC not only in the presence of linear DNA but also in the presence of supercoiled DNA. Can induce apoptosis in a p53/TP53 dependent manner. May regulate the TRAX/TSN complex formation. Potentiates transcriptional repression by NR1D1 and THRB.

Gene ID:

C1D

Uniprot

Q13901

Synonyms:

Nuclear nucleic acid, binding protein C1D (hC1D), C1D

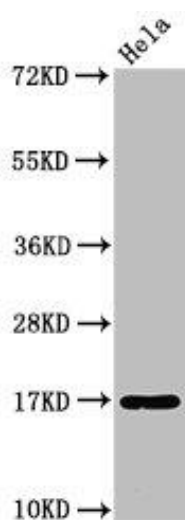
Immunogen:

Recombinant Human Nuclear nucleic acid, binding protein C1D protein (1-135AA).

Storage:

Preservative: 0.03% Proclin 300. Constituents: 50% Glycerol, 0.01M PBS, PH 7.4

Product Images



Western Blot

Positive WB detected in: HeLa whole cell lysate

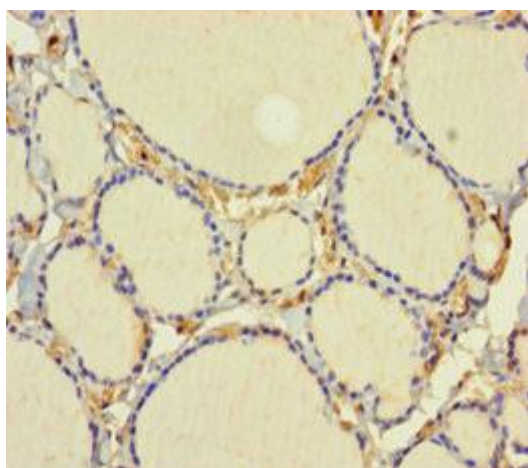
All lanes: C1D antibody at 3.2 μ g/ml

Secondary

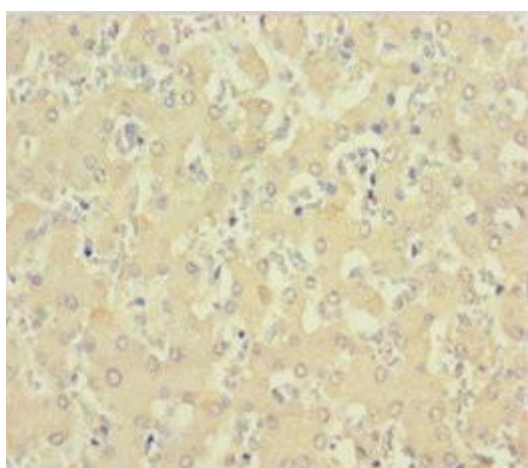
Goat polyclonal to rabbit IgG at 1/50000 dilution

Predicted band size: 17 kDa

Observed band size: 17 kDa



Immunohistochemistry of paraffin-embedded human thyroid tissue using PACO31688 at dilution of 1:100.



Immunohistochemistry of paraffin-embedded human liver tissue using PACO31688 at dilution of 1:100.