

PACO31744

Product Information

Size:

50ug

Reactivity:

Human, Mouse

Source:

Rabbit

Isotype:

IgG

Applications:

ELISA, WB, IHC, CHIP

Recommended dilutions:

ELISA:1:2000-1:10000, WB:1:1000-1:5000,
IHC:1:20-1:200

Protein Background:

Essential component of the NELF complex, a complex that negatively regulates the elongation of transcription by RNA polymerase II. The NELF complex, which acts via an association with the DSIF complex and causes transcriptional pausing, is counteracted by the P-TEFb kinase complex. The NELF complex is involved in HIV-1 latency possibly involving recruitment of PCF11 to paused RNA polymerase II. Binds RNA which may help to stabilize the NELF complex on nucleic acid. In vitro, binds weakly to the HIV-1 TAR RNA which is located in the long terminal repeat (LTR) of HIV-1. May be able to induce chromatin unfolding.

Gene ID:

NELFB

Uniprot

Q8WX92

Synonyms:

Negative elongation factor B (NELF-B) (Cofactor of BRCA1), NELFB, COBRA1 KIAA1182

Immunogen:

Recombinant Human Negative elongation factor B protein (8-199AA).

Storage:

Preservative: 0.03% Proclin 300. Constituents: 50% Glycerol, 0.01M PBS, PH 7.4

Product Images



Western Blot

All lanes: NELFB antibody at 2 μ g/ml

Lane 1: NIH/3T3 whole cell lysate

Lane 2: HL60 whole cell lysate

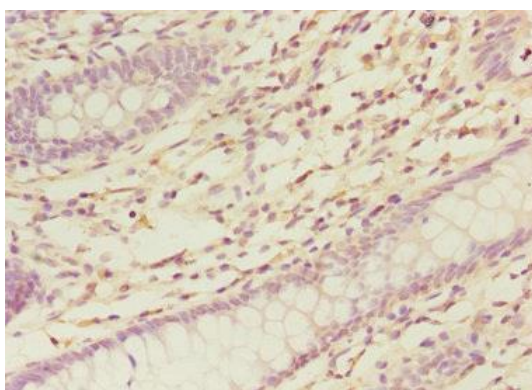
Secondary

Goat polyclonal to rabbit IgG at 1/15000 dilution

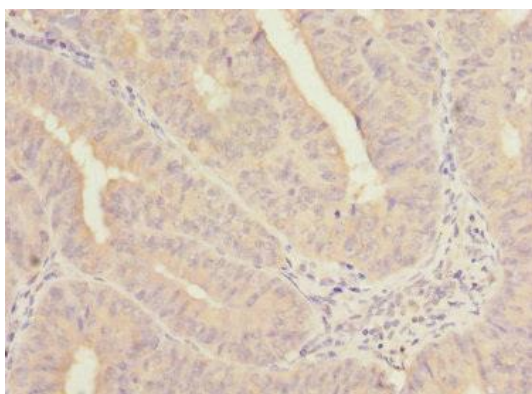
Predicted band size: 66 kDa

Observed band size: 66 kDa

.



Immunohistochemistry of paraffin-embedded human colon cancer using PACO31744 at dilution of 1:100.



Immunohistochemistry of paraffin-embedded human endometrial cancer using PACO31744 at dilution of 1:100.