

BTBD2 Antibody



PACO31904

Product Information

Size:

50ug

Reactivity:

Human

Source:

Rabbit

Isotype:

IgG

Applications:

ELISA, WB, IHC, IF

Recommended dilutions:

ELISA:1:2000-1:10000, WB:1:500-1:2000,
IHC:1:20-1:200, IF:1:50-1:200

Protein Background:

Gene ID:

BTBD2

Uniprot

Q9BX70

Synonyms:

BTB/POZ domain-containing protein 2, BTBD2

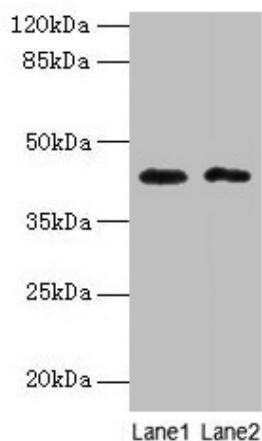
Immunogen:

Recombinant Human BTB/POZ domain-containing protein 2 protein (321-525AA).

Storage:

Preservative: 0.03% Proclin 300. Constituents: 50% Glycerol, 0.01M PBS, PH 7.4

Product Images



Western blot

All lanes: BTBD2 antibody at 6 μ g/ml

Lane 1: HeLa whole cell lysate

Lane 2: MDA-MB-231 whole cell lysate

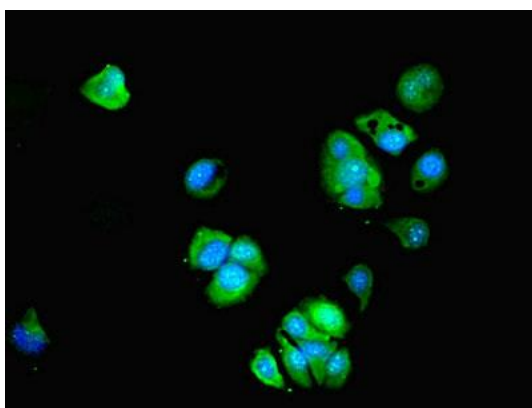
Secondary

Goat polyclonal to rabbit IgG at 1/10000 dilution

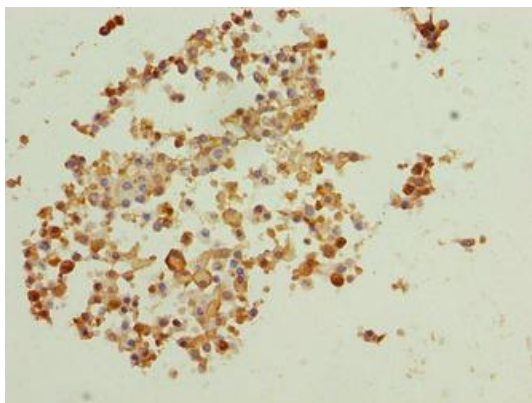
Predicted band size: 56, 23 kDa

Observed band size: 42 kDa

.



Immunofluorescent analysis of MCF-7 cells using PACO31904 at dilution of 1:100 and Alexa Fluor 488-conjugated AffiniPure Goat Anti-Rabbit IgG(H+L).



Immunohistochemistry of paraffin-embedded human breast cancer using PACO31904 at dilution of 1:100.