

RPN1 Antibody



PACO31912

Product Information

Size:

50ug

Reactivity:

Human

Source:

Rabbit

Isotype:

IgG

Applications:

ELISA, WB, IHC

Recommended dilutions:

ELISA:1:2000-1:10000, WB:1:1000-1:5000,
IHC:1:20-1:200

Protein Background:**Gene ID:**

RPN1

Uniprot

P04843

Synonyms:

Dolichyl-diphosphooligosaccharide--protein glycosyltransferase subunit 1 (Dolichyl-diphosphooligosaccharide--protein glycosyltransferase 67 kDa subunit) (Ribophorin I) (RPN-I) (Ribophorin-1), RPN1

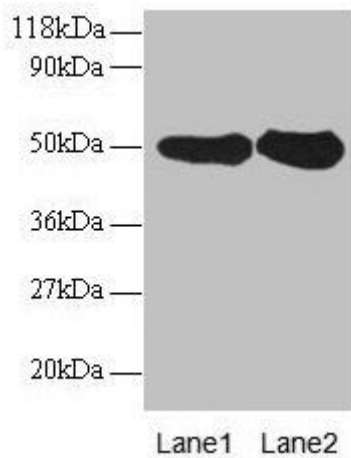
Immunogen:

Recombinant Human Dolichyl-diphosphooligosaccharide--protein glycosyltransferase 48 kDa subunit protein (44-427AA).

Storage:

Preservative: 0.03% Proclin 300. Constituents: 50% Glycerol, 0.01M PBS, PH 7.4

Product Images



Western blot

All lanes: RPN1 antibody at 2 μ g/ml

Lane 1: EC109 whole cell lysate

Lane 2: 293T whole cell lysate

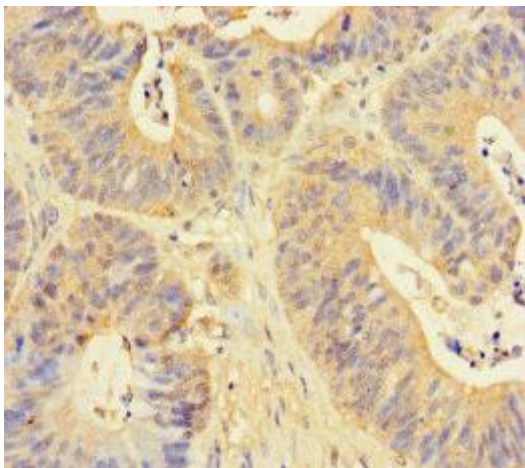
Secondary

Goat polyclonal to rabbit IgG at 1/15000 dilution

Predicted band size: 50 kDa

Observed band size: 50 kDa

.



Immunohistochemistry of paraffin-embedded human colon cancer using PACO31912 at dilution of 1:100.