

SCAMP3 Antibody



PACO31928

Product Information

Size:

50ug

Reactivity:

Human

Source:

Rabbit

Isotype:

IgG

Applications:

ELISA, WB, IHC, IF

Recommended dilutions:

ELISA:1:2000-1:10000, WB:1:1000-1:5000,
IHC:1:20-1:200, IF:1:50-1:200

Protein Background:

Gene ID:

SCAMP3

Uniprot

O14828

Synonyms:

Secretory carrier-associated membrane protein 3 (Secretory carrier membrane protein 3), SCAMP3, C1orf3 PROPIN1

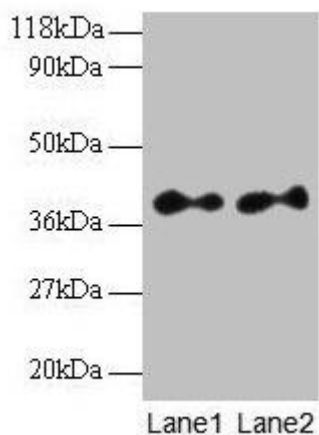
Immunogen:

Recombinant Human Secretory carrier-associated membrane protein 3 protein (2-170AA).

Storage:

Preservative: 0.03% Proclin 300. Constituents: 50% Glycerol, 0.01M PBS, PH 7.4

Product Images



Western blot

All lanes: SCAMP3 antibody at 2 μ g/ml

Lane 1: EC109 whole cell lysate

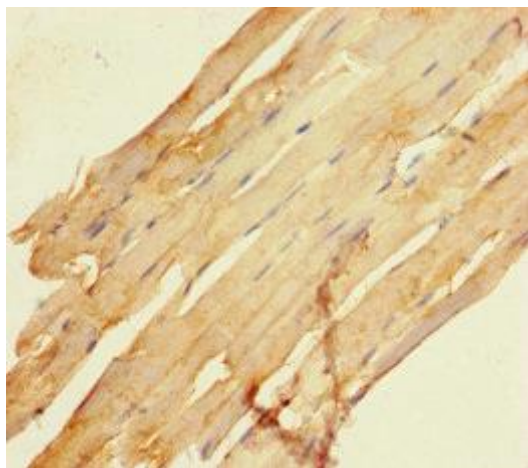
Lane 2: 293T whole cell lysate

Secondary

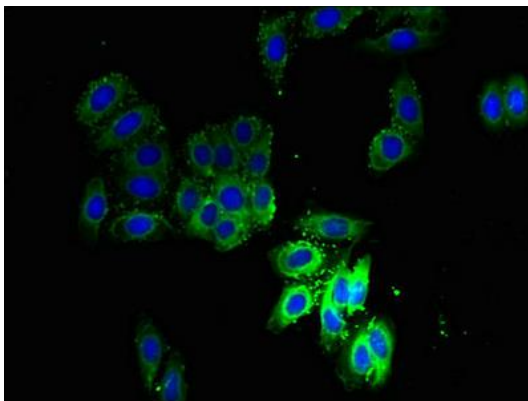
Goat polyclonal to rabbit IgG at 1/15000 dilution

Predicted band size: 39, 36 kDa

Observed band size: 39 kDa



Immunohistochemistry of paraffin-embedded human skeletal muscle tissue using PACO31928 at dilution of 1:100.



Immunofluorescent analysis of HepG2 cells using PACO31928 at dilution of 1:100 and Alexa Fluor 488-conjugated AffiniPure Goat Anti-Rabbit IgG(H+L).