

PACO31944

Product Information

Size:

50ug

Reactivity:

Human

Source:

Rabbit

Isotype:

IgG

Applications:

ELISA, WB

Recommended dilutions:

ELISA:1:2000-1:10000, WB:1:1000-1:5000

Protein Background:

Rho GTPases are GTP binding proteins that regulate a wide spectrum of cellular functions. These cellular processes include cytoskeletal rearrangements, gene transcription, cell growth and motility. Activation of Rho GTPases is under the direct control of guanine nucleotide exchange factors (GEFs). p114RhoGEF acts as guanine nucleotide exchange factor (GEF) for RhoA GTPases. It may play a role in actin cytoskeleton reorganization in different tissues since its activation induces formation of actin stress fibers. It also acts as a GEF for RAC1, inducing production of reactive oxygen species (ROS), but does not act as a GEF for CDC42. The G protein beta-gamma (Gbetagamma) subunits of heterotrimeric G proteins act as activators, explaining the integrated effects of LPA and other G-protein coupled receptor agonists on actin stress fiber formation, cell shape change and ROS production.

Gene ID:

ARHGEF18

Uniprot

Q6ZSZ5

Synonyms:

Rho guanine nucleotide exchange factor 18 (114 kDa Rho-specific guanine nucleotide exchange factor) (p114-Rho-GEF) (p114RhoGEF) (Septin-associated RhoGEF) (SA-RhoGEF), ARHGEF18, KIAA0521

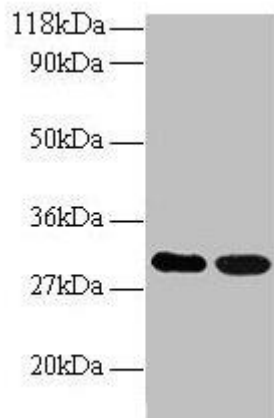
Immunogen:

Recombinant Human Rho guanine nucleotide exchange factor 18 protein (159-551AA).

Storage:

Preservative: 0.03% Proclin 300. Constituents: 50% Glycerol, 0.01M PBS, PH 7.4

Product Images



Western blot

All lanes: ARHGEF18 antibody at 2 μ g/ml

Lane 1: EC109 whole cell lysate

Lane 2: 293T whole cell lysate

Secondary

Goat polyclonal to rabbit IgG at 1/15000 dilution

Predicted band size: 131, 115 kDa

Observed band size: 30 kDa

.