

PACO31956

Product Information

Size:

50ug

Reactivity:

Human

Source:

Rabbit

Isotype:

IgG

Applications:

ELISA, WB, IHC

Recommended dilutions:

ELISA:1:2000-1:10000, WB:1:1000-1:5000,
IHC:1:20-1:200

Protein Background:

Gene ID:

ERP29

Uniprot

P30040

Synonyms:

Endoplasmic reticulum resident protein 29 (ERp29) (Endoplasmic reticulum resident protein 28) (ERp28) (Endoplasmic reticulum resident protein 31) (ERp31), ERP29, C12orf8 ERP28

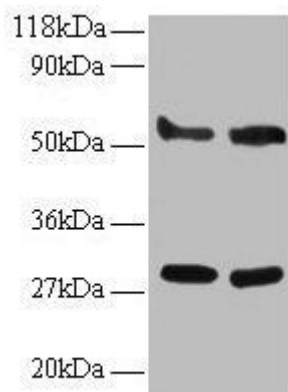
Immunogen:

Recombinant Human Endoplasmic reticulum resident protein 29 protein (40-251AA).

Storage:

Preservative: 0.03% Proclin 300. Constituents: 50% Glycerol, 0.01M PBS, PH 7.4

Product Images



Western blot

All lanes: ERP29 antibody at 2 μ g/ml

Lane 1: EC109 whole cell lysate

Lane 2: 293T whole cell lysate

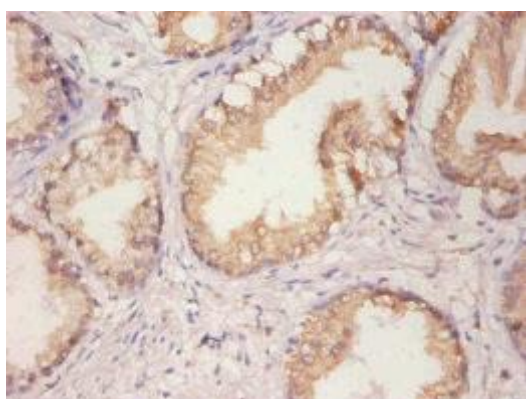
Secondary

Goat polyclonal to rabbit IgG at 1/15000 dilution

Predicted band size: 29, 6 kDa

Observed band size: 29, 55 kDa

.



Immunohistochemistry of paraffin-embedded human prostate tissue using PACO31956 at dilution of 1:100.