

PACO32016

---

## Product Information

**Size:**

50ug

**Reactivity:**

Human

**Source:**

Rabbit

**Isotype:**

IgG

**Applications:**

ELISA, IHC

**Recommended dilutions:**

ELISA:1:2000-1:10000, IHC:1:20-1:200

**Protein Background:**

cell surface, extracellular space, enzyme inhibitor activity, growth factor activity, integrin binding, phospholipase inhibitor activity, acylglycerol homeostasis, artery morphogenesis, cell-matrix adhesion, cholesterol homeostasis.

**Gene ID:**

ANGPTL3

**Uniprot**

Q9Y5C1

**Synonyms:**

Angiopoietin-related protein 3 (Angiopoietin-5) (ANG-5) (Angiopoietin-like protein 3) [Cleaved into: ANGPTL3(17-221); ANGPTL3(17-224)], ANGPTL3, ANGPT5

**Immunogen:**

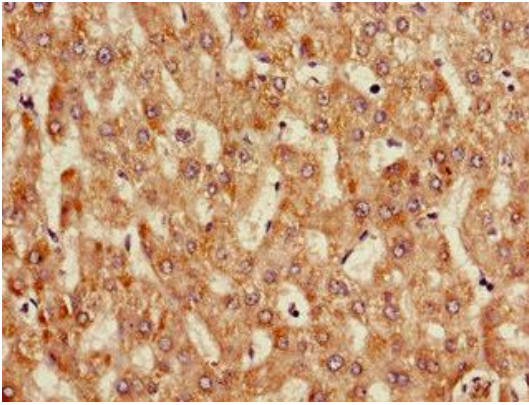
Recombinant Human Angiopoietin-related protein 3 protein (17-268AA).

**Storage:**

Preservative: 0.03% Proclin 300. Constituents: 50% Glycerol, 0.01M PBS, PH 7.4

## Product Images

---



Immunohistochemistry of paraffin-embedded human liver tissue using PACO32016 at dilution of 1:100.