

BMP4 Antibody



PACO32032

Product Information

Size:

50ug

Reactivity:

Human, Mouse, Zebrafish

Source:

Rabbit

Isotype:

IgG

Applications:

ELISA, WB, IHC

Recommended dilutions:

ELISA:1:2000-1:10000, WB:1:500-1:5000,
IHC:1:100-1:1000

Protein Background:

Induces cartilage and bone formation. Also act in mesoderm induction, tooth development, limb formation and fracture repair. Acts in concert with PTHLH/PTHRP to stimulate ductal outgrowth during embryonic mammary development and to inhibit hair follicle induction.

Gene ID:

BMP4

Uniprot

P12644

Synonyms:

Bone morphogenetic protein 4 (BMP-4) (Bone morphogenetic protein 2B) (BMP-2B), BMP4, BMP2B DVR4

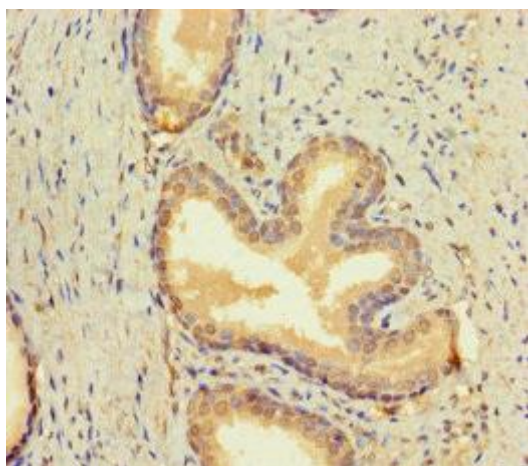
Immunogen:

Recombinant Human Bone morphogenetic protein 4 protein (303-408AA).

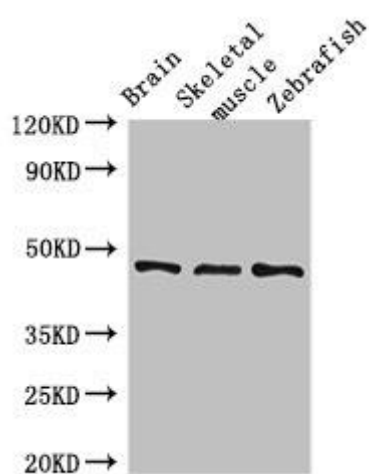
Storage:

Preservative: 0.03% Proclin 300. Constituents: 50% Glycerol, 0.01M PBS, PH 7.4

Product Images



Immunohistochemistry of paraffin-embedded human prostate cancer using PACO32032 at dilution of 1:100.



Western Blot

Positive WB detected in: Mouse brain tissue, Mouse skeletal muscle tissue, Zebrafish tissue

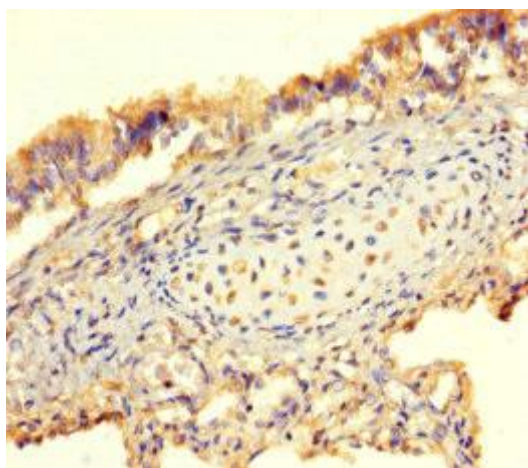
All lanes: BMP4 antibody at 3 μ g/ml

Secondary

Goat polyclonal to rabbit IgG at 1/50000 dilution

Predicted band size: 47 kDa

Observed band size: 47 kDa



Immunohistochemistry of paraffin-embedded human lung tissue using PACO32032 at dilution of 1:100.