

KLK3 Antibody



PACO32236

Product Information

Size:

50ug

Reactivity:

Human

Source:

Rabbit

Isotype:

IgG

Applications:

ELISA, IHC

Recommended dilutions:

ELISA:1:2000-1:10000, IHC:1:500-1:1000

Protein Background:

Hydrolyzes semenogelin-1 thus leading to the liquefaction of the seminal coagulum.

Gene ID:

KLK3

Uniprot

P07288

Synonyms:

Prostate-specific antigen (PSA) (EC 3.4.21.77) (Gamma-seminoprotein) (Seminin) (Kallikrein-3) (P-30 antigen) (Semenogelase), KLK3, APS

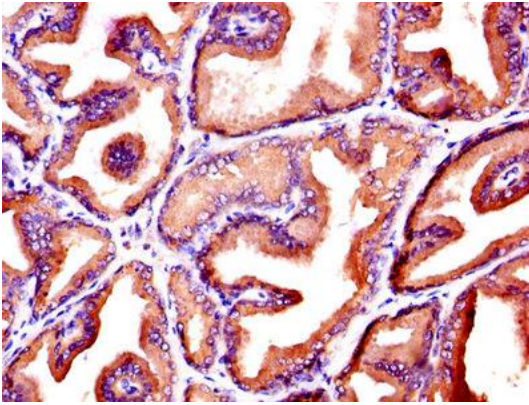
Immunogen:

Recombinant Human Prostate-specific antigen protein (28-261AA).

Storage:

Preservative: 0.03% Proclin 300. Constituents: 50% Glycerol, 0.01M PBS, PH 7.4

Product Images



IHC image of PACO32236 diluted at 1:600 and staining in paraffin-embedded human prostate tissue performed on a Leica Bond™ system. After dewaxing and hydration, antigen retrieval was mediated by high pressure in a citrate buffer (pH 6.0). Section was blocked with 10% normal goat serum 30min at RT. Then primary antibody (1% BSA) was incubated at 4°C overnight. The primary is detected by a biotinylated secondary antibody and visualized using an HRP conjugated SP system.