

SNCA Antibody



PACO32296

Product Information

Size:

50ug

Reactivity:

Human

Source:

Rabbit

Isotype:

IgG

Applications:

ELISA, WB, IHC

Recommended dilutions:

ELISA:1:2000-1:10000, WB:1:1000-1:5000,
IHC:1:20-1:200

Protein Background:

Gene ID:

SNCA

Uniprot

P37840

Synonyms:

Alpha-synuclein (Non-A beta component of AD amyloid) (Non-A4 component of amyloid precursor) (NACP), SNCA, NACP PARK1

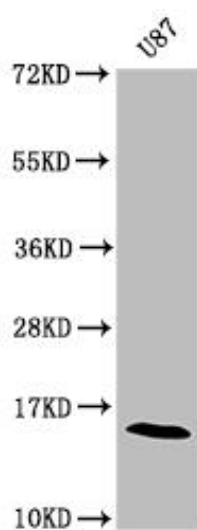
Immunogen:

Recombinant Human Alpha-synuclein protein (1-139AA).

Storage:

Preservative: 0.03% Proclin 300. Constituents: 50% Glycerol, 0.01M PBS, PH 7.4

Product Images



Western blot

All lanes: SNCA antibody at 2 μ g/ml + 293T whole cell lysate

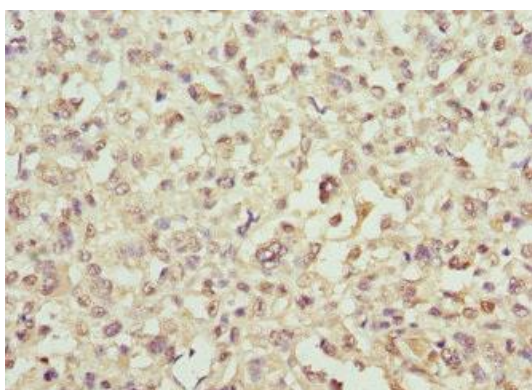
Secondary

Goat polyclonal to rabbit IgG at 1/15000 dilution

Predicted band size: 15, 12, 14 kDa

Observed band size: 118 kDa

.



Immunohistochemistry of paraffin-embedded human melanoma using PACO32296 at dilution of 1:100.