

Product Information

Size:

50ug

Reactivity:

Human

Source:

Rabbit

Isotype:

IgG

Applications:

ELISA, WB, IHC

Recommended dilutions:

ELISA:1:2000-1:10000, WB:1:1000-1:5000,
IHC:1:20-1:200

Protein Background:

Delivers retinol from the liver stores to the peripheral tissues. In plasma, the RBP-retinol complex interacts with transthyretin, this prevents its loss by filtration through the kidney glomeruli.

Gene ID:

RBP4

Uniprot

P02753

Synonyms:

Retinol-binding protein 4 (Plasma retinol-binding protein) (PRBP) (RBP) [Cleaved into: Plasma retinol-binding protein(1-182); Plasma retinol-binding protein(1-181); Plasma retinol-binding protein(1-179); Plasma retinol-binding protein(1-176)], RBP4

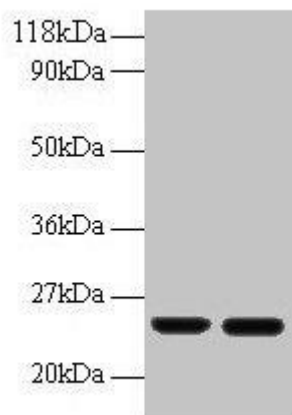
Immunogen:

Recombinant Human Retinol-binding protein 4 protein (19-201AA).

Storage:

Preservative: 0.03% Proclin 300. Constituents: 50% Glycerol, 0.01M PBS, PH 7.4

Product Images



Western blot

All lanes: RBP4 antibody at 2 μ g/ml

Lane 1: Human positive serum at 1: 10

Lane 2: Human positive serum at 1: 100

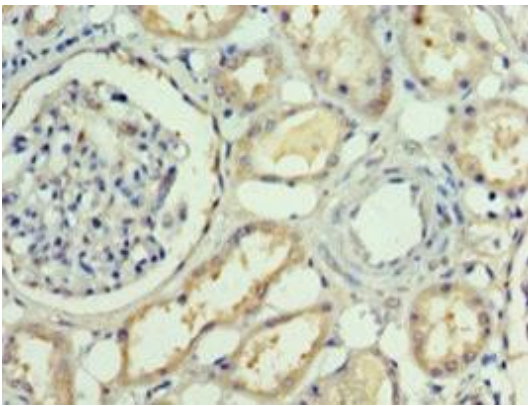
Secondary

Goat polyclonal to rabbit IgG at 1/50000 dilution

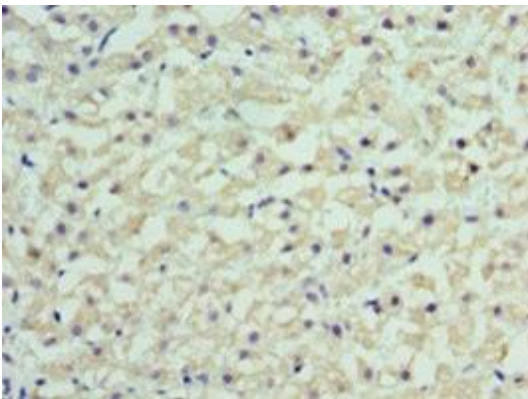
Predicted band size: 24 kDa

Observed band size: 24 kDa

.



Immunohistochemistry of paraffin-embedded human kidney tissue using PACO32316 at dilution of 1:100.



Immunohistochemistry of paraffin-embedded human liver cancer using PACO32316 at dilution of 1:100.