

# TIMP2 Antibody



PACO32380

---

## Product Information

**Size:**

50ug

**Reactivity:**

Human

**Source:**

Rabbit

**Isotype:**

IgG

**Applications:**

ELISA, WB

**Recommended dilutions:**

ELISA:1:2000-1:10000, WB:1:1000-1:5000

**Protein Background:**

Complexes with metalloproteinases (such as collagenases) and irreversibly inactivates them by binding to their catalytic zinc cofactor. Known to act on MMP-1, MMP-2, MMP-3, MMP-7, MMP-8, MMP-9, MMP-10, MMP-13, MMP-14, MMP-15, MMP-16 and MMP-19.

**Gene ID:**

TIMP2

**Uniprot**

P16035

**Synonyms:**

Metalloproteinase inhibitor 2 (CSC-21K) (Tissue inhibitor of metalloproteinases 2) (TIMP-2), TIMP2

**Immunogen:**

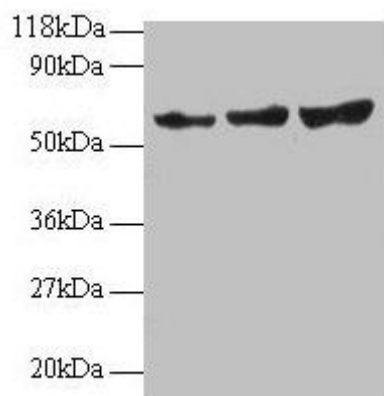
Recombinant Human Metalloproteinase inhibitor 2 protein (30-220AA).

**Storage:**

Preservative: 0.03% Proclin 300. Constituents: 50% Glycerol, 0.01M PBS, PH 7.4

## Product Images

---



### Western blot

All lanes: TIMP2 antibody at 2 $\mu$ g/ml

Lane 1: EC109 whole cell lysate

Lane 2: 293T whole cell lysate

Secondary

Goat polyclonal to rabbit IgG at 1/15000 dilution

Predicted band size: 25 kDa

Observed band size: 60 kDa