

Product Information

Size:

50ug

Reactivity:

Human, Mouse

Source:

Rabbit

Isotype:

IgG

Applications:

ELISA, WB, IHC, IF

Recommended dilutions:

ELISA:1:2000-1:10000, WB:1:500-1:5000,
IHC:1:20-1:200, IF:1:50-1:200

Protein Background:

Cardiac hormone which may function as a paracrine antifibrotic factor in the heart. Also plays a key role in cardiovascular homeostasis through natriuresis, diuresis, vasorelaxation, and inhibition of renin and aldosterone secretion. Specifically binds and stimulates the cGMP production of the NPR1 receptor. Binds the clearance receptor NPR3.

Gene ID:

NPPB

Uniprot

P16860

Synonyms:

Natriuretic peptides B (Gamma-brain natriuretic peptide) [Cleaved into: Brain natriuretic peptide 32 (BNP(1-32)) (BNP-32); BNP(1-30); BNP(1-29); BNP(1-28); BNP(2-31); BNP(3-32); BNP(3-30); BNP(3-29); BNP(4-32); BNP(4-31); BNP(4-30); BNP(4-29); BNP(4-27); BNP(5-32); BNP(5-31); BNP(5-29)], NPPB

Immunogen:

Recombinant Human Natriuretic peptides B protein (27-102AA).

Storage:

Preservative: 0.03% Proclin 300. Constituents: 50% Glycerol, 0.01M PBS, PH 7.4

Product Images



Western blot

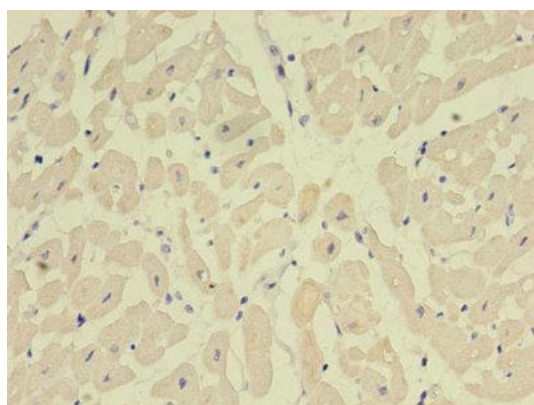
All lanes: NPPB antibody at 2 μ g/ml + Mouse brain tissue

Secondary

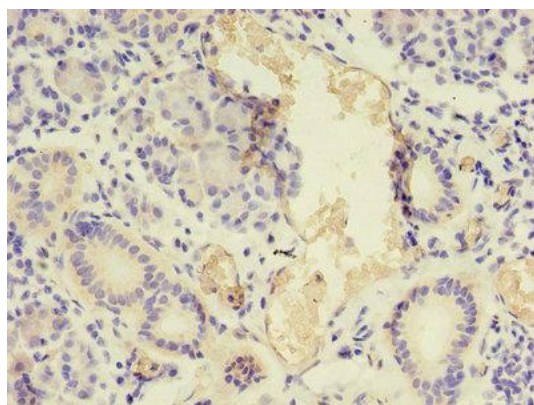
Goat polyclonal to rabbit IgG at 1/10000 dilution

Predicted band size: 15 kDa

Observed band size: 15 kDa



Immunohistochemistry of paraffin-embedded human heart tissue using PACO32500 at dilution of 1:100.



Immunohistochemistry of paraffin-embedded human pancreatic tissue using PACO32500 at dilution of 1:100.