

# MFGE8 Antibody



PACO32536

---

## Product Information

**Size:**

50ug

**Reactivity:**

Human, Mouse

**Source:**

Rabbit

**Isotype:**

IgG

**Applications:**

ELISA, WB, IHC

**Recommended dilutions:**

ELISA:1:2000-1:10000, WB:1:500-1:5000,  
IHC:1:20-1:200

**Protein Background:**

Plays an important role in the maintenance of intestinal epithelial homeostasis and the promotion of mucosal healing. Promotes VEGF-dependent neovascularization. By similarity. Contributes to phagocytic removal of apoptotic cells in many tissues. Specific ligand for the alpha-v/beta-3 and alpha-v/beta-5 receptors. Also binds to phosphatidylserine-enriched cell surfaces in a receptor-independent manner. Zona pellucida-binding protein which may play a role in gamete interaction. Binds specifically to rotavirus and inhibits its replication. Ref.15. Medin is the main constituent of aortic medial amyloid.

**Gene ID:**

MFGE8

**Uniprot**

Q08431

**Synonyms:**

Lactadherin (Breast epithelial antigen BA46) (HMFG) (MFGM) (Milk fat globule-EGF factor 8) (MFG-E8) (SED1) [Cleaved into: Lactadherin short form; Medin], MFGE8

**Immunogen:**

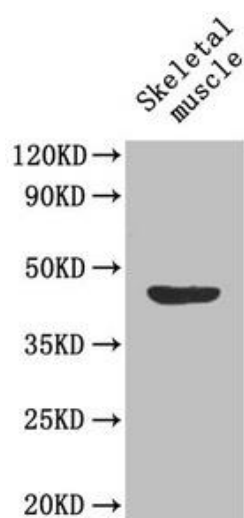
Recombinant Human Lactadherin protein (25-334AA).

**Storage:**

Preservative: 0.03% Proclin 300. Constituents: 50% Glycerol, 0.01M PBS, PH 7.4

## Product Images

---



### Western Blot

Positive WB detected in: Mouse skeletal muscle tissue

All lanes: MFG8 antibody at 1.6 $\mu$ g/ml

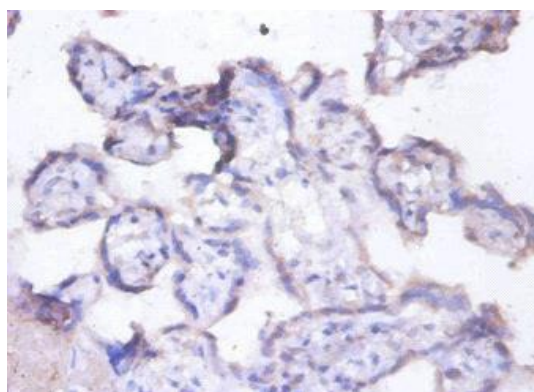
Secondary

Goat polyclonal to rabbit IgG at 1/50000 dilution

Predicted band size: 44, 32, 38, 39 kDa

Observed band size: 44 kDa

.



Immunohistochemistry of paraffin-embedded human placenta tissue using PACO32536 at dilution of 1:100.