

L1 Antibody



PACO32592

Product Information

Size:

50ug

Reactivity:

Human papillomavirus type 18

Source:

Rabbit

Isotype:

IgG

Applications:

ELISA, WB

Recommended dilutions:

ELISA:1:2000-1:10000, WB:1:1000-1:5000

Protein Background:

Forms an icosahedral capsid with a T=7 symmetry and a 50 nm diameter. The capsid is composed of 72 pentamers linked to each other by disulfide bonds and associated with L2 proteins. Binds to heparan sulfate proteoglycans on the basement membrane to provide initial virion attachment to target cells. Basement membrane is exposed only after epithelium trauma. Additionally, the alpha6 integrin complexed with either beta1 or beta4 integrin has been proposed to act as a coreceptor recognized by L1. Once attached, integrin complexed with beta4 integrin has been proposed to act as a coreceptor recognized by L1. Once attached, the virion enters the host cell via clathrin-mediated endocytosis and the genomic DNA is released to the host nucleus. The virion assembly takes place within the cell nucleus. Encapsulates the genomic DNA together with protein L2.

Gene ID:

L1

Uniprot

P06794

Synonyms:

Major capsid protein L1, L1

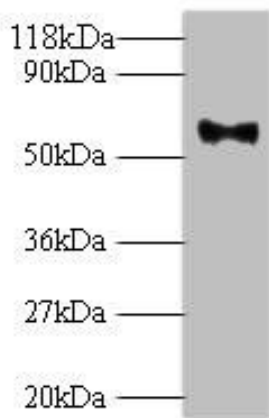
Immunogen:

Recombinant HPV18 Major capsid protein L1 protein (1-568AA).

Storage:

Preservative: 0.03% Proclin 300. Constituents: 50% Glycerol, 0.01M PBS, PH 7.4

Product Images



Western blot

All lanes: Major capsid protein L1 antibody at 2 μ g/ml + 293T whole cell lysate

Secondary

Goat polyclonal to rabbit IgG at 1/10000 dilution

Predicted band size: 62 kDa

Observed band size: 62 kDa

.