

# Cxcl11 Antibody



PACO32688

---

## Product Information

**Size:**

50ug

**Reactivity:**

Mouse

**Source:**

Rabbit

**Isotype:**

IgG

**Applications:**

ELISA, IHC

**Recommended dilutions:**

ELISA:1:2000-1:10000, IHC:1:20-1:200

**Protein Background:**

**Gene ID:**

Cxcl11

**Uniprot**

Q9JHH5

**Synonyms:**

C-X-C motif chemokine 11 (Interferon-inducible T-cell alpha chemoattractant) (I-TAC) (Small-inducible cytokine B11), Cxcl11, Scyb11

**Immunogen:**

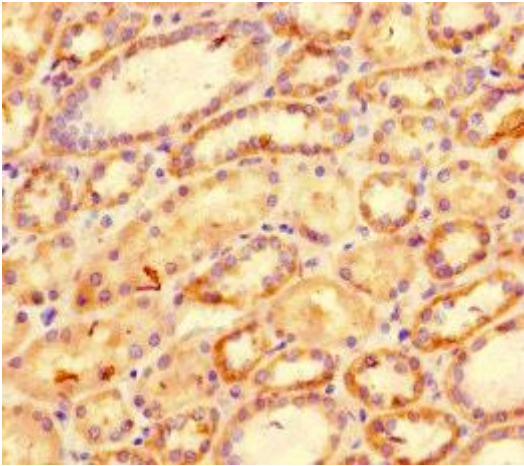
Recombinant Mouse C-X-C motif chemokine 11 protein (22-98AA).

**Storage:**

Preservative: 0.03% Proclin 300. Constituents: 50% Glycerol, 0.01M PBS, PH 7.4

## Product Images

---



Immunohistochemistry of paraffin-embedded human kidney tissue using PACO32688 at dilution of 1:100.