

PACO32744

---

## Product Information

**Size:**

50ug

**Reactivity:**

Human, Mouse

**Source:**

Rabbit

**Isotype:**

IgG

**Applications:**

ELISA, WB, IHC

**Recommended dilutions:**

ELISA:1:2000-1:10000, WB:1:1000-1:5000,  
IHC:1:20-1:200

**Protein Background:**

Has neurotrophic and neuroprotective properties on a broad spectrum of central nervous system (CNS) neurons. Binds, in a calcium-dependent manner, to cultured neocortical neurons and promotes cell survival.

**Gene ID:**

ENO2

**Uniprot**

P09104

**Synonyms:**

Gamma-enolase (EC 4.2.1.11) (2-phospho-D-glycerate hydro-lyase) (Enolase 2) (Neural enolase) (Neuron-specific enolase) (NSE), ENO2

**Immunogen:**

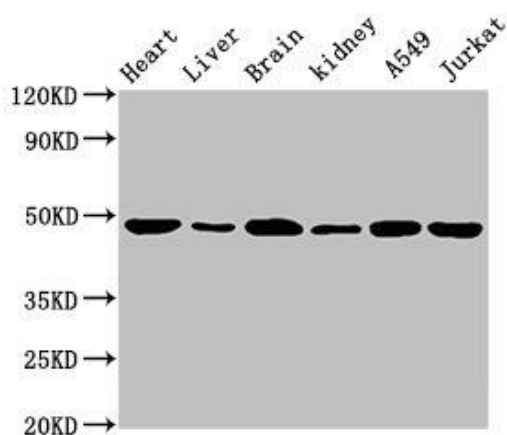
Recombinant Human Gamma-enolase protein (2-431AA).

**Storage:**

Preservative: 0.03% Proclin 300. Constituents: 50% Glycerol, 0.01M PBS, PH 7.4

## Product Images

---



### Western Blot

Positive WB detected in: Mouse heart tissue, Mouse liver tissue, Mouse brain tissue, Mouse kidney tissue, A549 whole cell lysate, Jurkat whole cell lysate

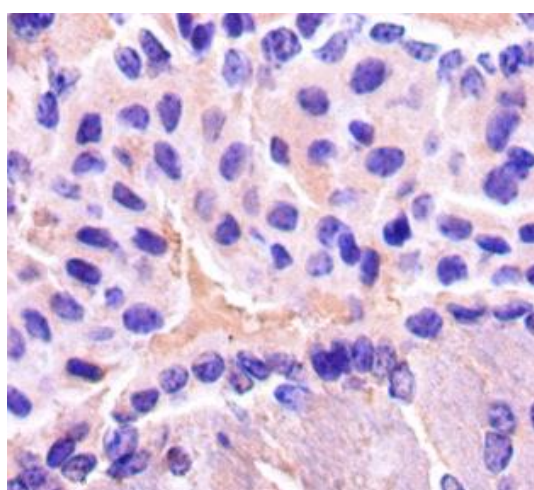
All lanes: ENO2 antibody at 1.5 µg/ml

Secondary

Goat polyclonal to rabbit IgG at 1/10000 dilution

Predicted band size: 48, 43 kDa

Observed band size: 48 kDa



Immunohistochemistry of paraffin-embedded mouse brain tissue using PACO32744 at dilution of 1:50.