

PACO32756

Product Information

Size:

50ug

Reactivity:

Human, Mouse

Source:

Rabbit

Isotype:

IgG

Applications:

ELISA, WB, IHC, IF

Recommended dilutions:

ELISA:1:2000-1:10000, WB:1:500-1:2000,
IHC:1:200-1:500, IF:1:50-1:200

Protein Background:

Gene ID:

WFDC2

Uniprot

Q14508

Synonyms:

WAP four-disulfide core domain protein 2 (Epididymal secretory protein E4) (Major epididymis-specific protein E4) (Putative protease inhibitor WAP5), WFDC2, HE4 WAP5

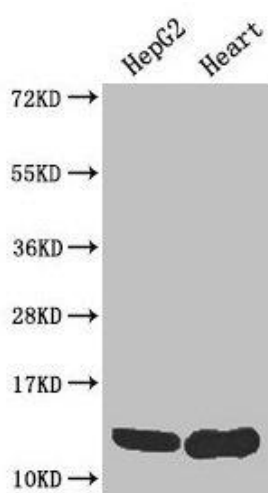
Immunogen:

Recombinant Human WAP four-disulfide core domain protein 2 protein (31-124AA).

Storage:

Preservative: 0.03% Proclin 300. Constituents: 50% Glycerol, 0.01M PBS, PH 7.4

Product Images



Western Blot

Positive WB detected in: HepG2 whole cell lysate, Mouse heart tissue

All lanes: WFDC2 antibody at 4 μ g/ml

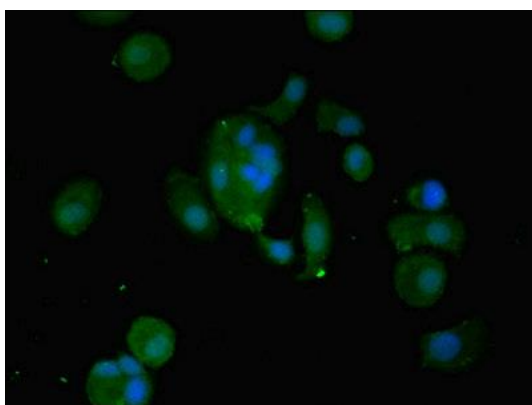
Secondary

Goat polyclonal to rabbit IgG at 1/50000 dilution

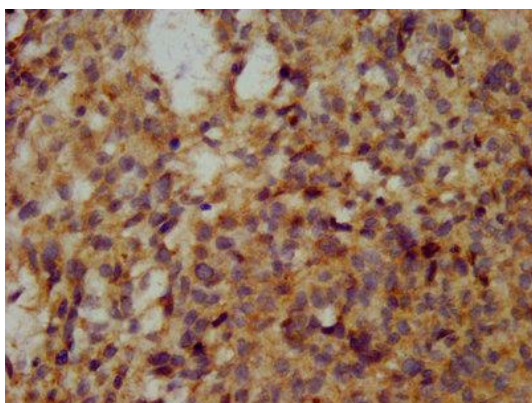
Predicted band size: 13, 9, 12 kDa

Observed band size: 13 kDa

.



Immunofluorescent analysis of MCF-7 cells using PACO32756 at dilution of 1:100 and Alexa Fluor 488-conjugated AffiniPure Goat Anti-Rabbit IgG(H+L).



IHC image of PACO32756 diluted at 1:200 and staining in paraffin-embedded human ovarian cancer performed on a Leica BondTM system. After dewaxing and hydration, antigen retrieval was mediated by high pressure in a citrate buffer (pH 6.0). Section was blocked with 10% normal goat serum 30min at RT. Then primary antibody (1% BSA) was incubated at 4°C overnight. The primary is detected by a biotinylated secondary antibody and visualized using an HRP conjugated SP system.