

PACO32764

---

## Product Information

**Size:**

50ug

**Reactivity:**

Human

**Source:**

Rabbit

**Isotype:**

IgG

**Applications:**

ELISA, IHC, IF

**Recommended dilutions:**

ELISA:1:2000-1:10000, IHC:1:20-1:200,  
IF:1:50-1:200

**Protein Background:**

Reversibly catalyzes the transfer of phosphate between ATP and various phosphogens (e. g. creatine phosphate). Creatine kinase isoenzymes play a central role in energy transduction in tissues with large, fluctuating energy demands, such as skeletal muscle, heart, brain and spermatozoa.

**Gene ID:**

CKMT1A

**Uniprot**

P12532

**Synonyms:**

Creatine kinase U-type, mitochondrial (EC 2.7.3.2) (acid, c-type mitochondrial creatine kinase) (Mia-CK) (Ubiquitous mitochondrial creatine kinase) (U-MtCK), CKMT1A; CKMT1B, CKMT; CKMT

**Immunogen:**

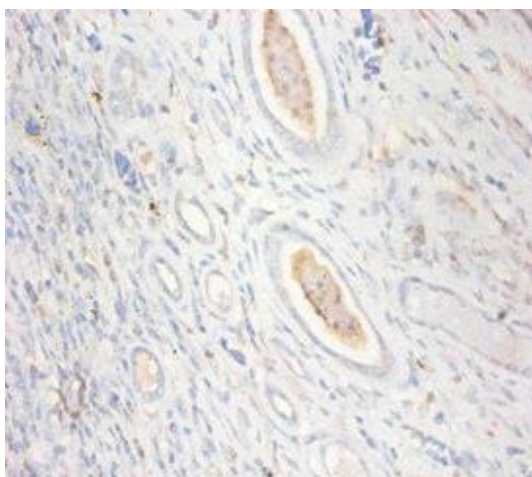
Recombinant Human Creatine kinase U-type, mitochondrial protein (40-417AA).

**Storage:**

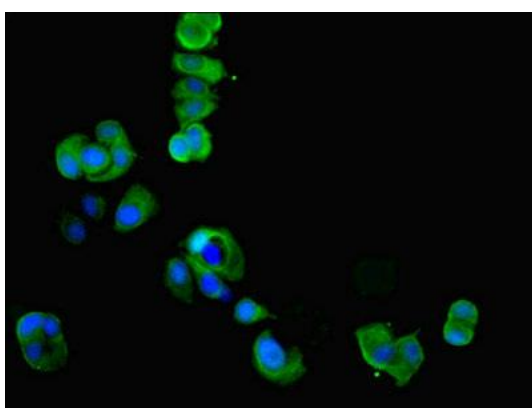
Preservative: 0.03% Proclin 300. Constituents: 50% Glycerol, 0.01M PBS, PH 7.4

## Product Images

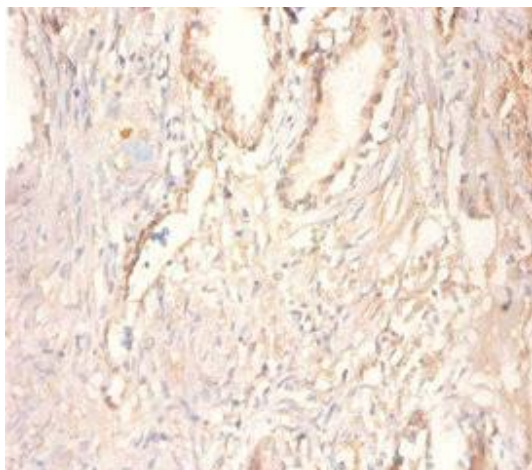
---



Immunohistochemistry of paraffin-embedded human kidney tissue using PACO32764 at dilution of 1:100.



Immunofluorescent analysis of MCF-7 cells using PACO32764 at dilution of 1:100 and Alexa Fluor 488-conjugated AffiniPure Goat Anti-Rabbit IgG(H+L).



Immunohistochemistry of paraffin-embedded human prostate tissue using PACO32764 at dilution of 1:100.