

KRT18 Antibody



PACO32872

Product Information

Size:

50ug

Reactivity:

Human, Zebrafish

Source:

Rabbit

Isotype:

IgG

Applications:

ELISA, WB, IHC, IF

Recommended dilutions:

ELISA:1:2000-1:10000, WB:1:500-1:5000,
IHC:1:100-1:1000, IF:1:50-1:500

Protein Background:

Involved in the uptake of thrombin-antithrombin complexes by hepatic cells By similarity. When phosphorylated, plays a role in filament reorganization. Involved in the delivery of mutated CFTR to the plasma membrane. Together with KRT8, is involved in interleukin-6 (IL-6)-mediated barrier protection.

Gene ID:

KRT18

Uniprot

P05783

Synonyms:

Keratin, type I cytoskeletal 18 (Cell proliferation-inducing gene 46 protein) (Cytokeratin-18) (CK-18) (Keratin-18) (K18), KRT18, CYK18

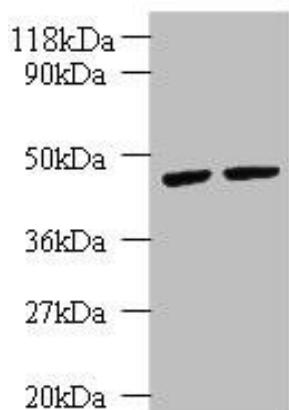
Immunogen:

Recombinant Human Keratin, type I cytoskeletal 18 protein (102-396AA).

Storage:

Preservative: 0.03% Proclin 300. Constituents: 50% Glycerol, 0.01M PBS, PH 7.4

Product Images



Western blot

All lanes: KRT18 antibody at 2 μ g/ml

Lane 1: K562 whole cell lysate

Lane 2: HepG2 whole cell lysate

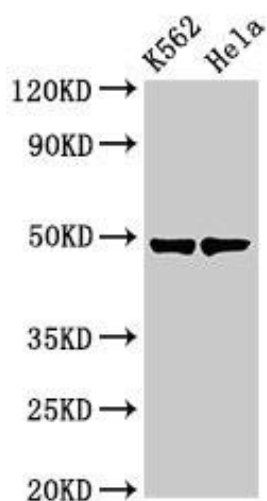
Secondary

Goat polyclonal to rabbit IgG at 1/10000 dilution

Predicted band size: 49 kDa

Observed band size: 49 kDa

.



Western Blot

Positive WB detected in: K562 whole cell lysate, HeLa whole cell lysate

All lanes: KRT18 antibody at 3 μ g/ml

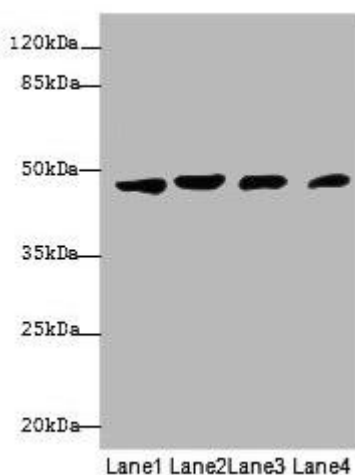
Secondary

Goat polyclonal to rabbit IgG at 1/50000 dilution

Predicted band size: 49 kDa

Observed band size: 49 kDa

.



Western blot

All lanes: KRT18 antibody at 12 μ g/ml

Lane 1: A431 whole cell lysate

Lane 2: HeLa whole cell lysate

Lane 3: Jurkat whole cell lysate

Lane 4: Zebrafish lysate

Secondary

Goat polyclonal to rabbit IgG at 1/10000 dilution

Predicted band size: 49 kDa

Observed band size: 49 kDa

.