

BMP6 Antibody



PACO32892

Product Information

Size:

50ug

Reactivity:

Human

Source:

Rabbit

Isotype:

IgG

Applications:

ELISA, IHC

Recommended dilutions:

ELISA:1:2000-1:10000, IHC:1:20-1:200

Protein Background:

Induces cartilage and bone formation.

Gene ID:

BMP6

Uniprot

P22004

Synonyms:

Bone morphogenetic protein 6 (BMP-6) (VG-1-related protein) (VG-1-R) (VGR-1), BMP6, VGR

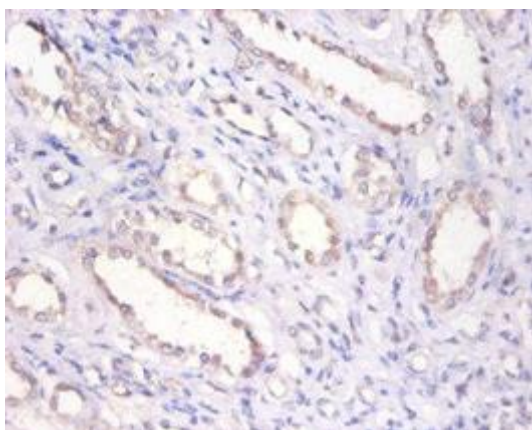
Immunogen:

Recombinant Human Bone morphogenetic protein 6 protein (382-513AA).

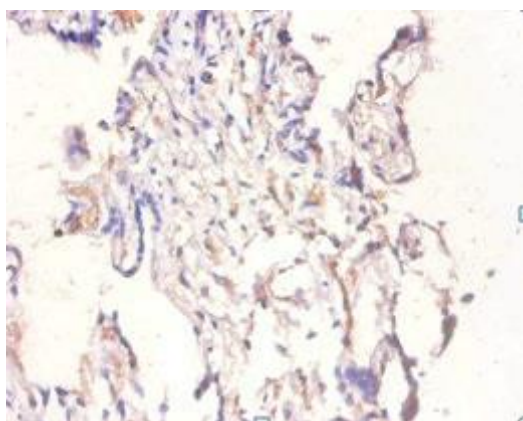
Storage:

Preservative: 0.03% Proclin 300. Constituents: 50% Glycerol, 0.01M PBS, PH 7.4

Product Images



Immunohistochemistry of paraffin-embedded human kidney tissue using PACO32892 at dilution of 1:100.



Immunohistochemistry of paraffin-embedded human placenta tissue using PACO32892 at dilution of 1:100.