

Product Information

Size:

50ug

Reactivity:

Human

Source:

Rabbit

Isotype:

IgG

Applications:

ELISA, WB, IHC

Recommended dilutions:

ELISA:1:2000-1:10000, WB:1:1000-1:5000,
IHC:1:20-1:200

Protein Background:

Thiol protease. Key protease responsible for the removal of the invariant chain from MHC class II molecules. The bond-specificity of this proteinase is in part similar to the specificities of cathepsin L.

Gene ID:

CTSS

Uniprot

P25774

Synonyms:

Cathepsin S (EC 3.4.22.27), CTSS

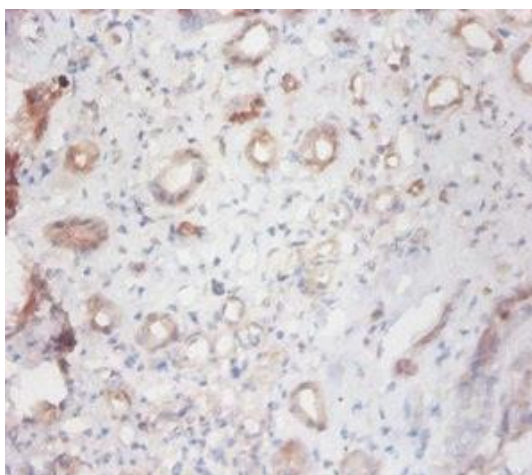
Immunogen:

Recombinant Human Cathepsin S protein (115-331AA).

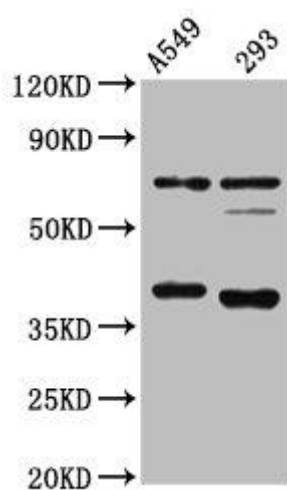
Storage:

Preservative: 0.03% Proclin 300. Constituents: 50% Glycerol, 0.01M PBS, PH 7.4

Product Images



Immunohistochemistry of paraffin-embedded human kidney tissue using PACO32900 at dilution of 1:100.



Western Blot

Positive WB detected in: A549 whole cell lysate, 293 whole cell lysate

All lanes: CTSS antibody at 1:4000

Secondary

Goat polyclonal to rabbit IgG at 1/50000 dilution

Predicted band size: 38, 32 kDa

Observed band size: 38 kDa