

CEACAM1 Antibody



PACO32904

Product Information

Size:

50ug

Reactivity:

Human

Source:

Rabbit

Isotype:

IgG

Applications:

ELISA, WB, IF

Recommended dilutions:

ELISA:1:2000-1:10000, WB:1:1000-1:5000,
IF:1:200-1:500

Protein Background:

Gene ID:

CEACAM1

Uniprot

P13688

Synonyms:

Carcinoembryonic antigen-related cell adhesion molecule 1 (Biliary glycoprotein 1) (BGP-1) (CD antigen CD66a), CEACAM1, BGP BGP1

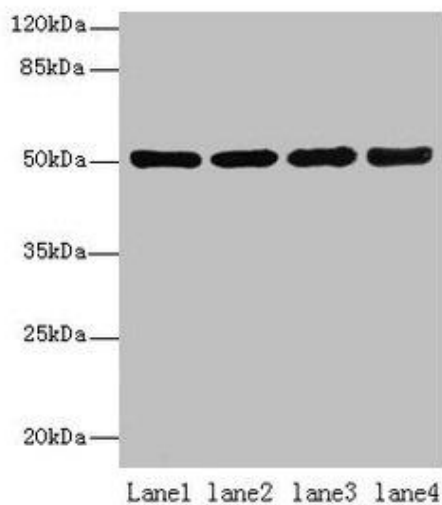
Immunogen:

Recombinant Human Carcinoembryonic antigen-related cell adhesion molecule 1 protein (35-428AA).

Storage:

Preservative: 0.03% Proclin 300. Constituents: 50% Glycerol, 0.01M PBS, PH 7.4

Product Images



Western blot

All lanes: CEACAM1 antibody at 10 μ g/ml

Lane 1: HT29 whole cell lysate

Lane 2: HCT116 whole cell lysate

Lane 3: COLO205 whole cell lysate

Lane 4: HepG2 whole cell lysate

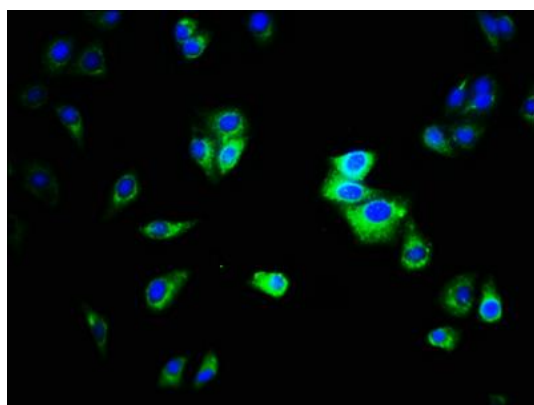
Secondary

Goat polyclonal to rabbit IgG at 1/10000 dilution

Predicted band size: 58, 46, 36, 39, 51, 47, 28, 44, 52, 40 kDa

Observed band size: 51 kDa

.



Immunofluorescence staining of HepG2 cells with PACO32904 at 1:333, counter-stained with DAPI. The cells were fixed in 4% formaldehyde, permeabilized using 0.2% Triton X-100 and blocked in 10% normal Goat Serum. The cells were then incubated with the antibody overnight at 4°C. The secondary antibody was Alexa Fluor 488-conjugated AffiniPure Goat Anti-Rabbit IgG(H+L).