

PACO32972

---

## Product Information

**Size:**

50ug

**Reactivity:**

Human

**Source:**

Rabbit

**Isotype:**

IgG

**Applications:**

ELISA, IHC

**Recommended dilutions:**

ELISA:1:2000-1:10000, IHC:1:20-1:200

**Protein Background:**

Catalyzes the calcium-dependent hydrolysis of the 2-acyl groups in 3-sn-phosphoglycerides. Thought to participate in the regulation of phospholipid metabolism in biomembranes including eicosanoid biosynthesis. Independent of its catalytic activity, acts as a ligand for integrins. Binds to and activates integrins ITGAV: ITGB3, ITGA4: ITGB1 and ITGA5: ITGB1. Binds to a site (site 2) which is distinct from the classical ligand-binding site (site 1) and induces integrin conformational changes and enhanced ligand binding to site 1. Induces cell proliferation in an integrin-dependent manner.

**Gene ID:**

PLA2G2A

**Uniprot**

P14555

**Synonyms:**

Phospholipase A2, membrane associated (EC 3.1.1.4) (GIIc sPLA2) (Group IIA phospholipase A2) (Non-pancreatic secretory phospholipase A2) (NPS-PLA2) (Phosphatidylcholine 2-acylhydrolase 2A), PLA2G2A, PLA2B PLA2L RASF-A

**Immunogen:**

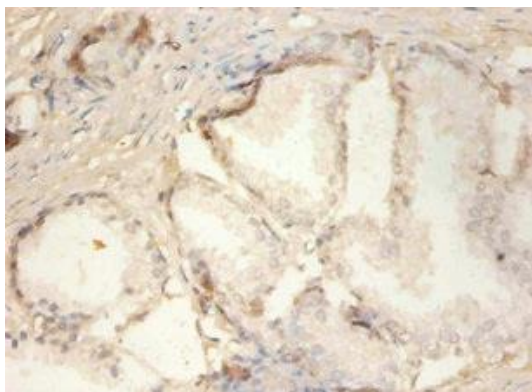
Recombinant Human Phospholipase A2, membrane associated protein (21-144AA).

**Storage:**

Preservative: 0.03% Proclin 300. Constituents: 50% Glycerol, 0.01M PBS, PH 7.4

## Product Images

---



Immunohistochemistry of paraffin-embedded human prostate tissue using PACO32972 at dilution of 1:100.