

ESR1 Antibody



PACO33020

Product Information

Size:

50ug

Reactivity:

Human, Rat

Source:

Rabbit

Isotype:

IgG

Applications:

ELISA, WB, IHC, CHIP

Recommended dilutions:

ELISA:1:2000-1:10000, WB:1:1000-1:5000,
IHC:1:20-1:200

Protein Background:**Gene ID:**

ESR1

Uniprot

P03372

Synonyms:

Estrogen receptor (ER) (ER-alpha) (Estradiol receptor) (Nuclear receptor subfamily 3 group A member 1), ESR1, ESR NR3A1

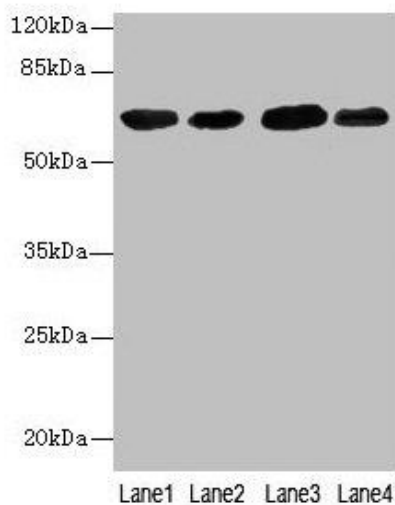
Immunogen:

Recombinant Human Estrogen receptor protein (10-591AA).

Storage:

Preservative: 0.03% Proclin 300. Constituents: 50% Glycerol, 0.01M PBS, PH 7.4

Product Images



Western blot

All lanes: ESR1 antibody at 7 μ g/ml

Lane 1: Hela whole cell lysate

Lane 2: MCF-7 whole cell lysate

Lane 3: Rat brain tissue

Lane 4: Colo320 whole cell lysate

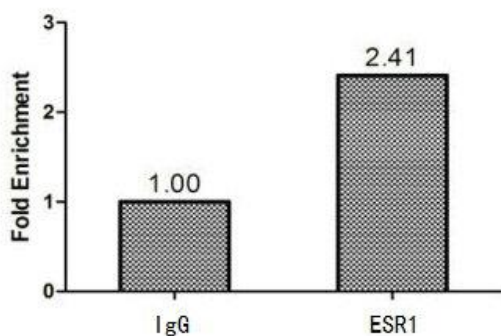
Secondary

Goat polyclonal to rabbit IgG at 1/10000 dilution

Predicted band size: 67, 54, 48, 36 kDa

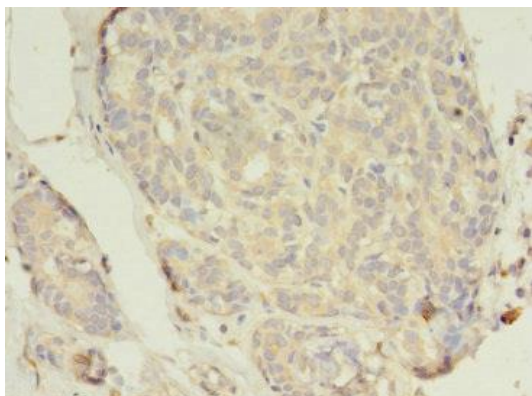
Observed band size: 67 kDa

.



Chromatin Immunoprecipitation MCF-7 (1.1*10⁶)

) were cross-linked with formaldehyde, sonicated, and immunoprecipitated with 4 μ g anti-ESR1 or a control normal rabbit IgG. The resulting ChIP DNA was quantified using real-time PCR with primers (PACO33020) against the ESR1 promoter.



Immunohistochemistry of paraffin-embedded human breast cancer using PACO33020 at dilution of 1:100.