

Product Information

Size:

50ug

Reactivity:

Human

Source:

Rabbit

Isotype:

IgG

Applications:

ELISA, WB, IHC

Recommended dilutions:

ELISA:1:2000-1:10000, WB:1:1000-1:5000,
IHC:1:20-1:200

Protein Background:

Has both folate hydrolase and N-acetylated-alpha-linked-acid, c dipeptidase (NAALADase) activity. Has a preference for tri-alpha-glutamate peptides. In the intestine, required for the uptake of folate. In the brain, modulates excitatory neurotransmission through the hydrolysis of the neuropeptide, N-acetylasparylglutamate (NAAG), thereby releasing glutamate. Involved in prostate tumor progression. Also exhibits a dipeptidyl-peptidase IV type activity. In vitro, cleaves Gly-Pro-AMC.

Gene ID:

FOLH1

Uniprot

Q04609

Synonyms:

Glutamate carboxypeptidase 2 (EC 3.4.17.21) (Cell growth-inhibiting gene 27 protein) (Folate hydrolase 1) (Folylpoly-gamma-glutamate carboxypeptidase) (FGCP) (Glutamate carboxypeptidase II) (GCPII) (Membrane glutamate carboxypeptidase) (mGCP) (N-acetylated-alpha-linked acid, c dipeptidase I) (NAALADase I) (Prostate-specific membrane antigen) (PSM) (PSMA) (Pteroylpoly-gamma-glutamate carboxypeptidase), FOLH1, FOLH NAALAD1 PSM PSMA

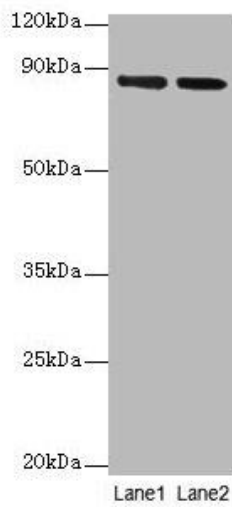
Immunogen:

Recombinant Human Glutamate carboxypeptidase 2 protein (48-750AA).

Storage:

Preservative: 0.03% Proclin 300. Constituents: 50% Glycerol, 0.01M PBS, PH 7.4

Product Images



Western blot

All lanes: FOLH1 antibody at 2 μ g/ml

Lane 1: U251 whole cell lysate

Lane 2: PC-3 whole cell lysate

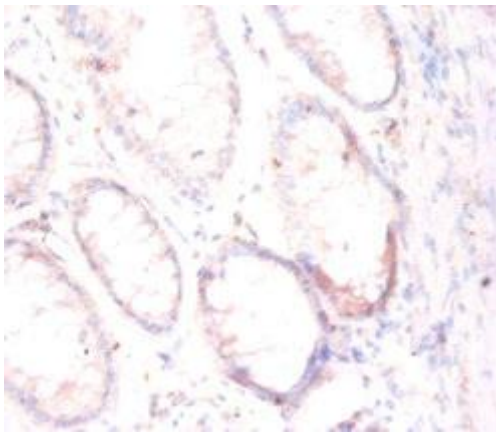
Secondary

Goat polyclonal to rabbit IgG at 1/10000 dilution

Predicted band size: 85, 13, 10, 78, 83, 81, 79, 51 kDa

Observed band size: 85 kDa

.



Immunohistochemistry of paraffin-embedded human colon cancer using PACO33100 at dilution of 1:50.