

# BGLAP Antibody



PACO33136

---

## Product Information

**Size:**

50ug

**Reactivity:**

Human

**Source:**

Rabbit

**Isotype:**

IgG

**Applications:**

ELISA, IHC

**Recommended dilutions:**

ELISA:1:2000-1:10000, IHC:1:20-1:200

**Protein Background:**

Constitutes 1-2% of the total bone protein. It binds strongly to apatite and calcium.

**Gene ID:**

BGLAP

**Uniprot**

P02818

**Synonyms:**

Osteocalcin (Bone Gla protein) (BGP) (Gamma-carboxyglutamic acid, containing protein), BGLAP

**Immunogen:**

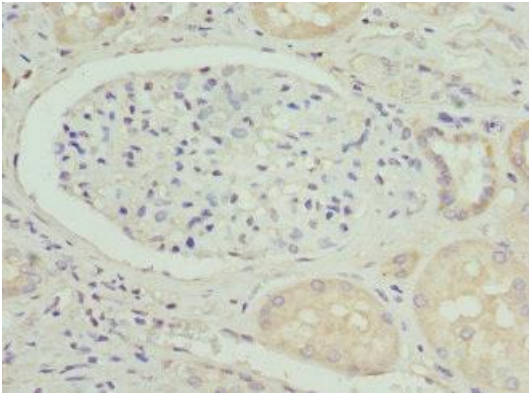
Recombinant Human Osteocalcin protein (52-100AA).

**Storage:**

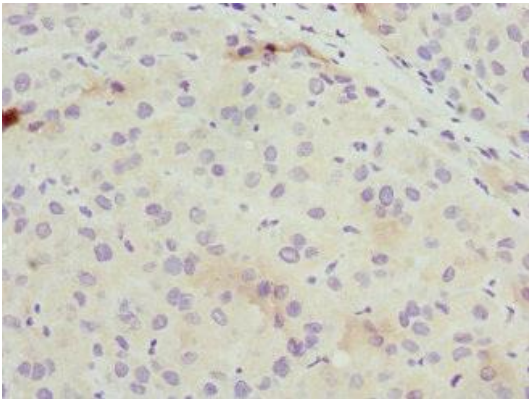
Preservative: 0.03% Proclin 300. Constituents: 50% Glycerol, 0.01M PBS, PH 7.4

## Product Images

---



Immunohistochemistry of paraffin-embedded human kidney tissue using PACO33136 at dilution of 1:100.



Immunohistochemistry of paraffin-embedded human liver cancer using PACO33136 at dilution of 1:100.