

# IAPP Antibody



PACO33200

---

## Product Information

**Size:**

50ug

**Reactivity:**

Human, Mouse

**Source:**

Rabbit

**Isotype:**

IgG

**Applications:**

ELISA, WB, IHC

**Recommended dilutions:**

ELISA:1:2000-1:10000, WB:1:500-1:5000,  
IHC:1:20-1:200

**Protein Background:**

Selectively inhibits insulin-stimulated glucose utilization and glycogen deposition in muscle, while not affecting adipocyte glucose metabolism.

**Gene ID:**

IAPP

**Uniprot**

P10997

**Synonyms:**

Islet amyloid polypeptide (Amylin) (Diabetes-associated peptide) (DAP) (Insulinoma amyloid peptide), IAPP

**Immunogen:**

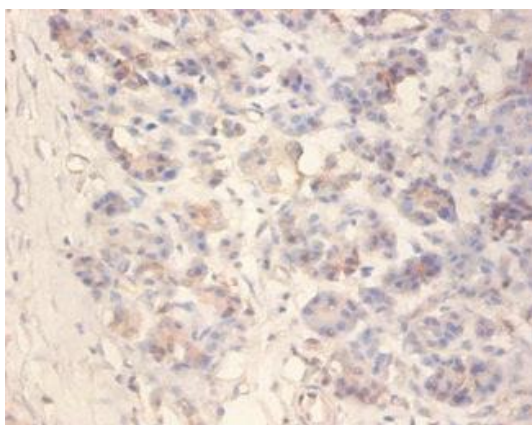
Recombinant Human Islet amyloid polypeptide protein (34-70AA).

**Storage:**

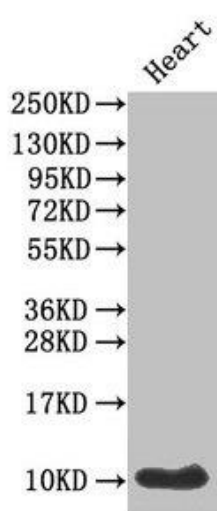
Preservative: 0.03% Proclin 300. Constituents: 50% Glycerol, 0.01M PBS, PH 7.4

## Product Images

---



Immunohistochemistry of paraffin-embedded human pancreatic tissue using PACO33200 at dilution of 1:100.



### Western Blot

Positive WB detected in: Mouse heart tissue

All lanes: IAPP antibody at 1 $\mu$ g/ml

Secondary

Goat polyclonal to rabbit IgG at 1/50000 dilution

Predicted band size: 10 kDa

Observed band size: 10 kDa